

Annual Report 2004-05



geelong
performing
artscentre



Index

Chairman's welcome	3
General Manager's report	4
Highlights	5
Strategic plan	5
Goal 1	
Develop our art and community	6-7
Goal 2	
Expand our audiences and activities	8-9
Shows and events	10-12
External ticketing	13
Venue usage	14-15
Goal 3	
Contribute to our region's innovation	16
Goal 4	
Ensure outstanding services and spaces	18-19
Trust and staff data	20
Staff employed	21
Organisational chart	22
Networks and memberships	23
Output statements	24-27
Compliance data	30-34
Whistleblowers protection act	34
Geelong Performing Arts Centre sponsors and partners	36
Financial report	37-53
Disclosure index	54-55

Our stage enriches your world...

Welcome to our annual report – a report which reflects on the performance of the Centre over the past year and celebrates our many successes in entertaining the greater Geelong community.

In our 24th year, Geelong Performing Arts Centre (GPAC) has delivered on an impressive number of commitments from our 5-year strategy and realised a number of all-time highs. Our strategy commits us to deliver outstanding entertainment to a greater number and broader reach of patrons. In addition, given that two thirds of the Centre's productions come from the Geelong region, we have also committed to further strengthening our relationship with our community, business partners and local governments.

This year the Shell Theatre Season realised record subscription levels and Musical Mornings moved to two performances of each production. GPAC broke new ground with local arts groups through our support and coordination of *Arti Gras* and *splash!dance Festival* as well as presenting the inaugural *Circus Bites Festival* in association with Geelong by the Bay Tourism. All are important connections to our vision as a Regional Arts Centre. In 2004 GPAC was also selected by VicHealth as one of three mentor organisations in Victoria and the recipient of the VicHealth 'Excellence in Health Promotion' award.

We have continued to work to integrate GPAC's Master Plan redevelopment with broader developments in Geelong's cultural precinct. We are confident that as we bring the Master Plan to fruition, we will have created a vibrant performing arts hub and a livelier arts scene for the benefit of the greater Geelong region.

GPAC's management and staff can take several curtain calls for the wonderful achievements they have realised this year. The Trust values and applauds their professionalism, love of the arts, energy and commitment to creating a memorable experience for our patrons. In particular, I recognise the leadership of Sally Beck, our General Manager, who after 5 years as General Manager has taken a year's maternity leave. I am delighted that we have attracted Geoff Street as General Manager during Sally's leave.

Thank you to Graeme Goldsworthy who retired from the GPAC Trust this year after seven years of magnificent contribution. Graeme's energy, wisdom and passion for GPAC will be sorely missed. We welcomed Janet Bond, Simon Guthrie and Sue Lansdell to the Trust and value the contribution they along with our other Trust members are making.

GPAC is a Victorian government agency, and relies on the support of the Bracks government and Minister Delahunty. GPAC's contribution to its community over the past year clearly demonstrates continuing realisation of the government's arts policy, Creative Capacity +.

Tim Orton

Chairman GPAC Trust

Chairman's welcome

The past year has been a most successful and vibrant one for GPAC. It has truly lived up to its vision 'to ensure the Greater Geelong Region is renowned for its creativity, energy and engagement with the arts'. I have only been in this position for the last two or three months of the year, however it is my pleasure to take the wheel from Sally Beck, whose stewardship, along with that of the Trust, has placed the organisation in such a strong position.

2004-05 was a year of firsts. For the first time, GPAC assisted local performing arts groups to come together for *Arti Gras*, a program of fun events for the whole family, presented by Geelong's leading arts groups such as Geelong Lyric Theatre Society and Geelong Repertory Theatre Company. GPAC has worked closely with these and many other local companies for some years, encouraging local use of the main theatres through discounts for community groups of up to 40%.

April 2005 saw the inaugural *Circus Bites*, a small circus festival, which we hope to grow, wrapped around the Australian Physical Theatre and Circus Association National Conference, with support from Geelong by the Bay Tourism and the City of Greater Geelong.

This year also saw the Geelong Dance Expo become the *splash!dance Festival*. It incorporated the first *Australian Choreographic Competition*, again with welcome support from City of Greater Geelong and in association with the Geelong Dance Network.

Finally, GPAC's enormously popular Musical Mornings program doubled from one performance of each production to two performances, greatly increasing total attendance at GPAC presentations in the process.

Perhaps most pleasing has been the growth in attendance. A nearly 40% increase in attendance at GPAC presentations, incorporating a 19% growth in subscriptions to GPAC seasons, leading to an 8% increase in attendance at all events at GPAC. In all areas except the education program, these figures far exceeded expectations and

contributed to a significant 19% increase in trading income. The education program still experienced an attendance increase of 15%, so perhaps we were over optimistic in our projections and it leaves us some room to move in the coming years.

This growth has come despite a relatively modest increase in productions and projects (from 40 to 42) and a 10% increase in the number of performances presented by GPAC (73 to 84).

GPAC is now 24 years old and the challenge to maintain the facilities in a condition expected by the public and hirers becomes more difficult each year. Upgrades continued this year from State Government support received last year through the Creating Place and Space Program. Additional funds were also received through the Disability Discrimination Act for compliance upgrades to technical and front of house facilities. Plans are underway for a significant refurbishment of the whole facility in order for GPAC to continue to provide high level arts programs and services to Geelong and regional audiences into its next 25 years.

My thanks to all our many partners and stakeholders; from the State Government, through Arts Victoria and the Department of Education and Training to our strong base of local corporate supporters which has expanded this year by 3 to 34. To all the Trust members for their outstanding voluntary contribution to the arts in the region and a very special mention to the GPAC staff for their professionalism, skills and dedication. All have made me very welcome in Sally's absence and I look forward to the coming year with enthusiasm. GPAC is a healthy and growing organisation with strong community and government connections, well placed to move into a new development era.

Geoff Street
General Manager

Highlights 2004-05

- ◇ Attendances of the centre increase to over 152,000
- ◇ *Arti Gras* a collaboration with over 20 local community arts organisations is launched
- ◇ *Circus Bites 2005* tempts the local community with outdoor aerial performances
- ◇ Inaugural *Australian Choreographic Competition* launched as part of the new look *splash!dance Festival*
- ◇ Jackie Weaver stars in the sell out season of *The Blonde, The Brunette and The Vengeful Redhead*
- ◇ Launch of a second performance of *Musical Mornings* concerts gives more seniors in the region access to high quality musical concerts.
- ◇ GPAC named as the recipient of the VicHealth 'Excellence in Health Promotion Award 2004'
- ◇ New website launched increasing website visits by over 80%

Our Vision

To make the Geelong region renowned for its creativity, energy and engagement of the arts

Our Mission

As a quality arts facility and dynamic organisation GPAC is an integral component of the fantastic lifestyle the Geelong region has to offer. We aim to

- provide access to performing arts
- provide opportunities to participate in performing arts
- entertain, stimulate and challenge our audiences
- nurture our community's artistic talent

Our Credo

Our Stage enriches your world

Our Goals

GPAC's ambition is captured by four overarching goals, to:

1. develop art and community
2. expand our audiences and activities
3. contribute to our region's innovation
4. ensure outstanding services and spaces

These goals will help deliver the Victorian Government's commitments to the arts articulated in its policy Creative Capacity + :

Arts Victoria - Creative Capacity +

1. Arts for all Victorians – a culture of participation
2. On the threshold: an economy based on innovation
3. Creative place: a dynamic arts sector

Our Values

We are passionate about the performing arts

We strive to provide both visitors and staff with a memorable experience by providing impeccable customer service.

We practise a positive and professional approach to our work, expressing a genuine enthusiasm, sense of fun and can do attitude.

We believe in teamwork, demonstrated by mutual respect, and open and honest communication.

We provide a secure and environmentally sound facility that ensures the safety of employees and customers.

Strategic plan 2003-08

Goal 1

Develop Art and Community

As part of the Geelong community GPAC works continuously to ensure that all within the greater Geelong region can access high quality arts. Embedded in our work practises is a belief that we as presenters must offer the very best in Australian performing arts to our audiences. We work effectively with our local and community producers to offer them support and assistance, through reduced venue hire and technical expertise to assist them to produce high quality theatre on which they can build expertise and audiences into the future.

Help me if you can...

The arts have long been recognised as a mechanism to promote mental health and wellbeing and to develop this GPAC has a long association with VicHealth .

Having been a part of their 'Major Arts Partnership Scheme' since 2000 we have worked with VicHealth to seek out and develop new and innovative programs that support a broad range of the community whom might otherwise be excluded from the arts and the benefits it has to our overall feeling of wellbeing.

Forming partnerships with a broad range of non-arts organisations that included, local councils, leading community support organisations and training providers, individuals whom might otherwise not have access to GPAC due to barriers such as being socially or geographically isolated or from low socio-economic backgrounds, accessed our programs and events throughout 2004-05.

In December 2004 GPAC was awarded the VicHealth 'Excellence in Health Promotion Award' in recognition of its partnership with SurfCoast Shire and CREATE Inc, a North Geelong Training provider, to encourage and include socially and geographically isolated seniors to attend the Musical Mornings Program.

Initially starting with a group of 25 this program now boasts a regular attendance of over 200. The same model has now been rolled out to include residents of the Borough of Queenscliffe and Golden Plains Shire.

In 2005 our journey to promote the benefits of the arts to Mental Health and Wellbeing continued when we where selected by VicHealth to become mentors in the Audience Access Mentorship Scheme.

One of only three organisations in the state to be selected, GPAC is proud that it will be able continue to seek new partners and mentor arts organisations in their development of programs to engage the broader community.

New initiatives include

- In association with Vision Australia providing audio description to our theatre audiences in 2006
- In partnership with Bethany Community Support Inc delivering an arts based program in two local schools that results in performances in the Blakiston Theatre.
- Promoting discussion and dialogue in the both the general and business community around the benefits of the arts to Mental Health and Wellbeing through open forums and debates.

Money, money, money ...

Fundraising is vital to many organisations in the region, especially the smaller ones, and in 2004-05 GPAC supported local organisations to promote and fundraise through donating over \$11,000 of tickets.

The organisations that were supported spanned a broad range of the community and included a number of new community based agencies requesting and/or receiving support. These included

- BAYSA Youth Services
- Glastonbury Family Services
- BCASA
- United Way
- Rainbow Riders
- Relay For life
- Shane O'Brien Asthma Memorial Foundation
- McKillop Family Services

New partners...

In 2004-05 GPAC has developed a number of new relationships that allow us through our daily business to support local organisations within the region.

MLI Services a subsidiary of Karingal Inc. is a Geelong based agency that supports adults with disabilities by seeking out opportunities for meaningful employment within the region. It operates a number of work units such as a mail house, mobile gardening services and packaging and assembly. In 2005 GPAC elected to use the MLI mail house unit for both external hirer and its own direct mail marketing.

Encore, encore...

Local producers, presenters, schools and community organisations have long recognised the benefits of utilising GPAC's professional theatres and staff to produce their own shows. GPAC's support through reduced venue hire rates of up to 40% means that they can achieve their goals by continuing to grow their audiences and the quality of their productions.

The local and non-local, productions included;

Annie Get Your Gun by Footlight productions

What's the Matter with Mary Jane by Mary Jane Productions

A Soldiers Wife by Music Box Theatre

Sinbad the Sailor by GSODA Junior Players

Sweeney Todd by Geelong Lyric Theatre Society Inc

Goal 2

Expand our audiences and activities

In 2004-05 our annual attendances grew 8% to just over 152,000 and subscriptions to all our programs increased over 35% with the Shell Theatre Season producing record numbers. This increase was in part due to a number of new initiatives that included *splash!dance Festival*, *Circus Bites 2005* and *Tamworth on Tour* all very different art forms engaging new audiences and increasing access to GPAC.

Committed to meeting the needs of the residents of the region GPAC strives to engage as many from the region as possible by scheduling a broad range of programs and encouraging and engaging new producers to utilise the centre.

Lets dance...

In partnership with Geelong Dance Network and the City of Greater Geelong, in July 2004 the '*splash!dance Festival*' was presented. Originally known as Dance Expo, for the first time the festival was extended to take on a national profile with the inclusion of the *Australian Choreographic Competition*.

During the festival the community was invited to take part in *Geelong's Biggest Dance Class*, an hour-long session featuring four very different dance styles, the Family Fun Day providing the opportunity to sample a plethora of dance whatever the age or ability, the very popular *Kids Day Out*, day long sessions designed to entice the younger members of the community, and an array of exciting dance workshops for every skill level.

Send in the clowns...

Outdoor aerial performances, Club Cabaret, circus skills workshops and fire twirling where just a few 'short sharp tastes' of Circus that the community could experience at GPAC during *Circus Bites*.

Presented in conjunction with Geelong by The Bay Tourism, *Circus Bites* took advantage of the National Circus Conference being held at GPAC in April.

Incorporating a family day - a free event open to all in the community - the festival took over the centre and outdoors engaging audiences both young and old with all that physical theatre has to offer. The festival looks set to build in the coming year and GPAC will be working hard to engage new partners to develop the concept into an even bigger annual event.

Our backyard...

Shell Theatre Season 2004-05

The 2004 Shell Theatre Season was marketed with the theme of 'Have a Ball' and the 2005 season was 'Our Backyard' which highlighted the fact that the Geelong community are fortunate to be able to have

such great artists coming to the region to perform at GPAC. Subscriptions to the 2005 season reached a record high and we were able to bring the best touring performing arts performances from across Australia to our own backyard!

As part of the 2004 season Bell Shakespeare Company performed a completely new version of *A Midsummer Night's Dream*. The hilarity of *The Underpants* was revealed in an adaptation written by Steve Martin and performed by Company B Belvoir. Julia Blake and Terry Norris gave an inspiring double act in *The Gin Game* and Barry Otto stunned everyone with his characterisation in a new Australian work, *Last Cab to Darwin*.

Five of the eight shows in the 2004-05 Shell Theatre Season were supported in their tour by the Australian Government through Playing Australia funding.

The 2005 season began with an outstanding sold-out performance by Jackie Weaver in *The Blonde, The Brunette and The Vengeful Redhead*, followed by the hilarious *Flatfoot* starring Drew Forsythe and the historically poignant play of women involved in or affected by the Vietnam War, *Minifields and Miniskirts*, from the Malthouse Theatre.

Musical Mornings

This much-loved program continues to grow with an increase in subscriptions for both Season 2, 2004 and Season 1, 2005. Artists such as David Hobson and Denis Walter plus the music of George Gershwin and the Radio Rhythm Orchestra delighted our daytime audiences throughout the second half of 2004. While early in

2005 the female stars of Australian music Rhonda Burchmore and Denise Drysdale entertained us along with a South Australian company singing the songs of Burt Bacharach and the Gilbert & Sullivan Company rollicked in the fun of *The Pirates of Penzance*

Bendigo Bank Family Magic

The Bendigo Bank Family Magic season had a bumper subscription take up in 2004. *Possum Magic* was an outstanding success. The season also contained two other interstate productions, *Hare Brain* from Spare Parts Puppet Theatre, WA and *Binni's Backyard* from Kite Theatre and Kooemba Jdarra, Indigenous Performing Arts Queensland.

In 2005 Barry The Bunyip, who lives in the bowels of GPAC, emerged as the new Family Magic champion and launched the season. Included in the line-up he announced *Baggy Pants* from Polyglot Puppet Theatre and *Sinbad the Sailor* from the ever-popular local company of talented children GSODA Junior Players.

Alcoa Education Program

The Alcoa Education Program is committed to developing a passion and understanding for the performing arts in young people. The 2004 the program included

- Professional Development Workshops for teachers in clowning and improvisation,
- an extended season of *Possum Magic*
- the 58th presentation of the *Geelong Schools Music and Movement Festival*
- the Kudos program, celebrating school performances
- the *Alcoa Poppykettle Festival* which in 2004 'Took to the High Seas' and had the added bonus of four artists in residence

In 2005 the Alcoa Education Program offered teachers training in dance, and choreography as well as sound and lighting. An extensive work experience program has been developed to offer students the opportunity to be a part of the festivals presented throughout the year. Many school groups were offered and taken on tours of the backstage areas where they were exposed to the machinations of a real working theatre.

Take Over is designed to give secondary students the opportunity to 'take over' the running of the Blakiston Theatre. As part of the program they write, produce, direct, design and perform their own work to their peers and communities. In 2005 they performed to an audience of over 190 people made up of friends, family and community members.

The road is long...

No need for our patrons to travel the highways and byways to see some of the best festivals from around the state and country because they came to us!

The Travelling Film Festival – Geelong was again presented with an outstanding line - up of art house films. The festival also provided the opportunity to meet the creative personnel behind many of the films on offer and find out more about the inner workings of film production, performing and funding.

Raw Comedy Regional Heats - the opportunity for all those budding stand-ups to take to the stage and wow us with their hysterical ability to be a clown was presented in the Shell Foyer hosted by Geelong's own celebrity funny man, Greg Fleet.

Presented for the first time *Tamworth on Tour* was a celebration of country music. Featuring nominated and past winners of the Tamworth Golden Guitar Awards, patrons eager to take part in this offshoot of the Tamworth Country Music Festival filled the Ford Theatre to hear some of Australia's finest country musicians come together in a single night's performance.

We are family...

Arti Gras, a celebration of local performing arts talent and activity and was presented early in 2005. A grant was received from the City of Greater Geelong and GPAC in partnership with Geelong Lyric Theatre and Geelong Repertory Theatre Company presented a day of workshops and performances culminating in a celebratory party. Over twenty local performing arts companies came together to profile their work to the many people who came along to see what opportunities in performing arts there were in the Geelong region.

Walk right in...

Before every Shell Theatre Season show local musicians or musical ensembles had the opportunity to perform in the foyer. This helps raise their profile and gives a live performance feel to the foyer as patrons dine and meet with friends prior to the shows.

Stop on by...

No need to travel far, as the vast array of theatre, concerts and festivals presented at GPAC ensured that patrons had access to a wide range of options when choosing their entertainment.

* denotes Deakin University Waterfront Campus Costa Hall presentations

Concerts

Adam Harvey
 Foster & Allen
 Gene Pitney
 Isla Grant
 Kasey Chambers
 Mosaic *
 My Friend The Chocolate Cake
 Sara Storer
 Bannockburn Primary School Concert *
 Bellaire Primary School Concert
 Belmont High School Spring Concert
 Celebration Evening for Melanie Jewson
 Charlie Landsborough
 Col Joy
 Dominic Kirwan
 Geelong Choral *
 Geelong College Foundation Concert *
 Geelong Concert Band *
 Geelong Grammar - Founders Day 150 Anniversary *
 Geelong Grammar Carnival of Choirs *
 Geelong Summer Music Camp 2005 *
 Tamworth On Tour
 Herne Hill Primary School Concert
 Finbar Fury
 Red Army Choir
 Melbourne Symphony Orchestra *
 Barker, Coleman Wright & Lane in Concert *
 Oberon South Primary School Concert
 Bjorn Again
 Saffire - The Australian Guitar Quartet
 Queen 2
 Rotary Club of Highton Star Search
 Bjorn Again
 Take Over Performance Night
 Tim McCallum & The Army Band *
 Victorian Seniors Concert
 Waterfront Christmas Concert *
 Whittington Primary School Concert

Dance

Anne Carrick Dance School Concert
 Anne Maree Corrigan Tap High Dance Concert
 Bellarine Calisthenics Concert
 Chaîne School Of Dance - Creations 2004
 DMC Dance Works Concert
 East Side Calisthenics Concert
 Geelong Ballet Centre Concert
 Geelong Calisthenics Concert
 Geelong Talent & Event Management Concert
 Hightone Dance Academy Concert
 Kerryn Louise Rayner Dance Concert
 Ocean Grove Calisthenics Concert
 Regional Calisthenics Competition
 Sandra Clack Ballet School Dance Concert
 Sheree Nash Dance Concert - Boogie Jam
 splash!dance Festival - Carnivale Day
 splash!dance Festival - Australian Choreographic Competition
 splash!dance Festival - Showcase Performance
 Swan Lake - St Petersburg Ballet
 Ultimate Dance - Excalibur
 Val Hannah Dance Concert
 Westcoast Calisthenics Concert
 Wingrove Calisthenics Concert
 Wish Upon A Star Concert

Education

Alcoa Poppykettle Festival
 Class Clowns
 Geelong Schools Music & Movement Festival
 Kudos Theatre Awards
 Takeover Skills Day
 Takeover Wise Up Day
 Macbeth
 Mr. Whiskers

Film

The Travelling Film Festival - Geelong
Bethany Arthouse Film Festival
Shootout Film Festival *

Graduations and Awards

Bellarine Secondary College Graduation
Belmont High School Awards *
Business and Community Awards (Bollies)
Christian College Awards *
Christian College Graduation *
Clonard College Graduation *
Corio Bay Secondary College Graduation
Deakin Graduation - April *
Deakin Graduation - October *
Geelong College Speech Day *
Golden Key Awards *
Gordon Institute of TAFE Graduation
Kardinia International College Awards *
Matthew Flinders Girls Secondary College Awards *
Newcomb Secondary College Awards
Newcomb Secondary College Graduations
Oberon High School Graduations *
Oxford Primary School Concert
Regional Training Awards
Sacred Heart Showcase *
St. Joseph's College Graduations *
Western Heights College Awards *
Western Heights College Graduations *

Musical Productions

Hair
Moses
Charade
Wizard of Oz
Sweeney Todd
Aladdin
Peter Pan

Sinbad the Sailor
The King & I
Looking Through a Glass Onion
A Soldiers Wife
Annie Get Your Gun
World War II 60th Anniversary Revue
Mosaic

Seminars, Conferences and Meetings

Circus Bites Conference 2005
Teachers PD Workshops
Present Yourself Professionally

Theatre

House Lights Down
An Evening with Queen Elizabeth
By the Skin of our Teeth
What's the Matter with Mary Jane
GPAC Theatre Season
The Blonde, The Brunette
& The Vengeful Redhead
A Midsummer Nights Dream
Barmaids
Flatfoot
Last Cab to Darwin
Minfields & Miniskirts
The Gin Game
The Underpants

Comedy

Akmal Live
Carl Barron
Hale & Pace
Jimeoin
Puppetry of the Penis
Defending The Caveman
Ross Nobel

Shows and events at GPAC

Stop on by...

Musical Mornings

Denis Walter
Big Band Swing
David Hobson
Denise Drysdale
Flat on Your Bacharach
Glory Of Gershwin
Great Music Hall
Guys, Dolls and Castanets
Pirates Of Penzance
Rhonda Burchmore



Family Magic

Baggy Pants
Binni's Backyard
Hare Brain
Peter Pan
Possum Magic
Sinbad the Sailor



External ticketing

GPAC Box Office was again the first choice for many presenters to ticket their event due to the consistently high level of service and product knowledge GPAC Box Office staff.

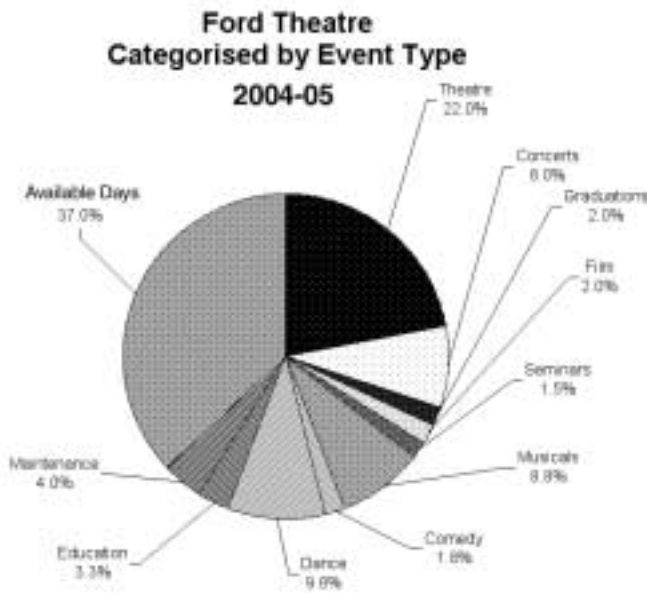
Cinderella	Musicbox Theatre Company
Cyndi Boste	Southern Rose, Torquay
Afterplay	Geelong Repertory Company
7 Easy Steps to a Knockout Marketing Plan	Black Dog Promotions
An Afternoon with Mark Holden and Ross Ryan	Acorn Productions
An Afternoon with Russell Morris	Acorn Productions
Bring Her Home	Courthouse
An Afternoon with Stephen Cummings	Acorn Productions
An Afternoon with Tim Freedman	Acorn Productions
Die Fledermaus	Co-Opera
Stories from Suburban Road	Geelong Repertory Company
Peter Pan	Musicbox Theatre Company
An Afternoon with Joe Camilleri	Acorn Productions
Bounce	Dance classes
An Evening with Jimmy Little	Acorn Productions
Justin Herald	Waterfront Café
Hidden	Courthouse
An Evening with Wendy Stapleton	Acorn Productions
Toast to the Coast	CoGG
Dressage with the Stars	Werribee Park
An Afternoon with Brian Cadd	Acorn Productions
Man the Balloon	Geelong Repertory Company
Neil Diamond Hits Show	Acorn Productions
An Afternoon with The Choirboys	Acorn Productions
Dean Vegas	Acorn Productions
Once Upon a Time	Fairy Park
Sunday Session	Bush Inn
A Midsummer Night's Dream	Scotchmans Hill
Music in the Gardens	Geelong Botanic Gardens
An Afternoon with Col Elliott	Acorn Productions
Blithe Spirit	Geelong Repertory Company
An Afternoon with Ross Wilson	Acorn Productions
A Midsummer Night's Dream	Geelong Botanic Gardens
Minya Concert Series	Minya Winery
An Afternoon with Mental as Anything	Acorn Productions
An Afternoon with the Drifters	Acorn Productions
Sweet Road	Geelong Repertory Company
Bay City Strings Meet the Mariachi	Waterfront Café
Groove for Reconciliation	Waterfront Café
Celtic Festival	Celtic Festival
An Afternoon with Cotton, Keays and Morris	Acorn Productions
Melbourne International 3 Day Event	Werribee Park

Venue usage

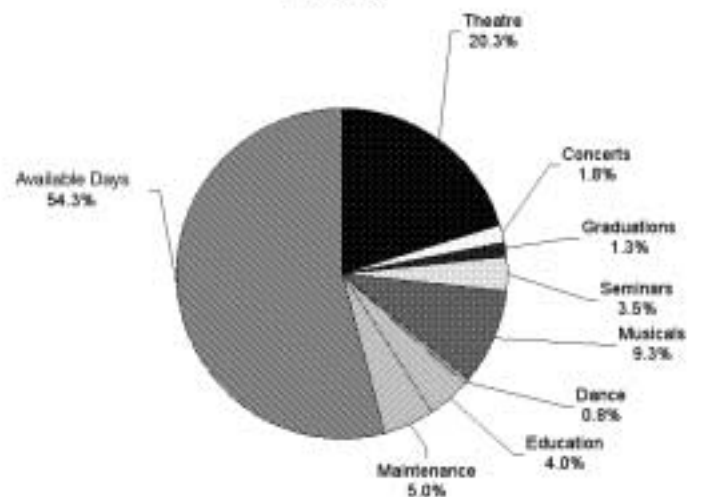
All our theatres continue to be well used in 2004-05. The majority of the 'available days' are generally low attractive days such as public holidays, Sundays and early week days.

Theatre usage by event type*

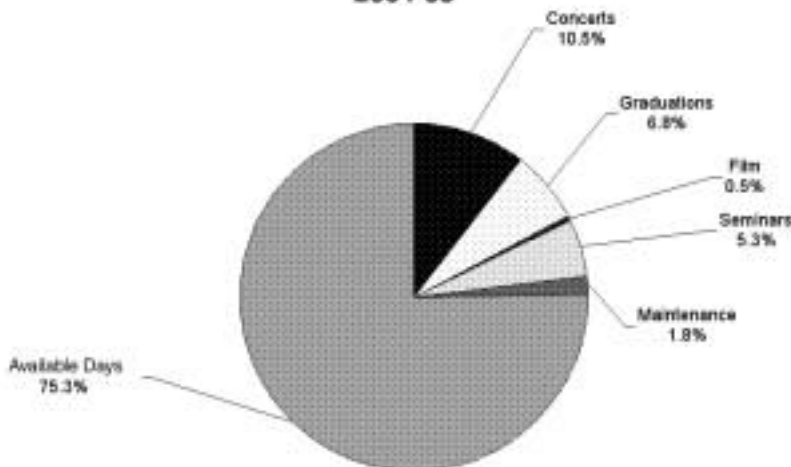
The major use of both the Ford and Blakiston Theatres in 2004-05 was for Theatre followed by Musical Theatre.



**Blakiston Theatre
Categorised by Event Type
2004-05**



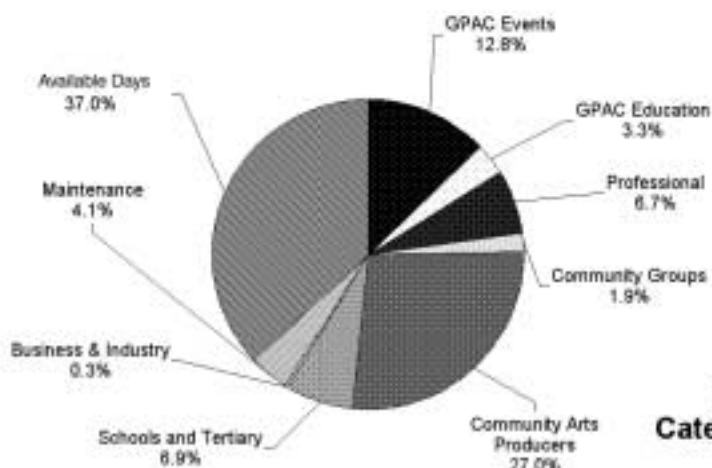
**Costa Hall
Categorised by Event Type
2004-05**



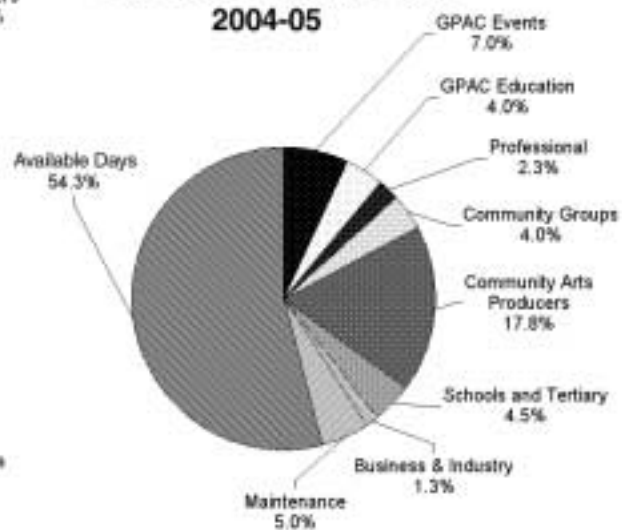
Theatre usage by hirers*

In 2004-05 venue usage in the Ford and Blakiston Theatres has increased for GPAC Education Programs

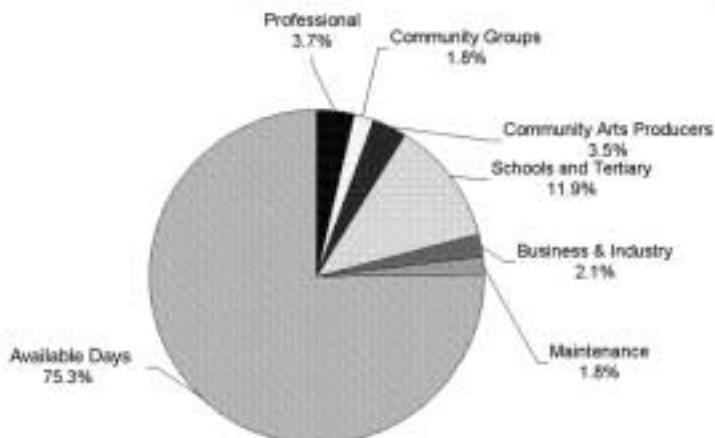
**Ford Theatre
Categorised by Hirer Type
2004-05**



**Blakiston Theatre
Categorised by Hirer Type
2004-05**



**Costa Hall
Categorised by Hirer Type
2004-05**



*For 'total' venue occupancy rates see page 26

Goal 3

Contribute to our regions innovation

GPAC continues to play a major role in the Cultural Precinct of Geelong. Through our membership of the Arts, Culture and Heritage Pillar of G21, GPAC is contributing to the development of the immediate area and broader urban planning in Geelong. GPAC chairs a sub-committee for the Arts Culture and Heritage Pillar's Lighthouse Project to coordinate planning and strengthen the Cultural Precinct.

In turn this links to GPAC's own proposed redevelopment Master Plan with support from the State Government through Arts Victoria. We are working to integrate GPAC's redevelopment with the City of Greater Geelong's strategic urban planning and other Cultural Precinct stakeholders.

Creating new opportunities and partnerships with local councils and associations resulted in a partnership with Geelong Dance Network and the City of Greater Geelong in July 2004 for the '*splash!dance Festival*' Originally known as *Dance Expo*, for the first time the festival was extended to take on a national profile with the inclusion of the *Australian Choreographic Competition*.

Whilst *Dance Expo/splash!dance Festival* were not new, the *Australian Choreographic Competition* is a new addition to dance sector development. In association with the Geelong Dance Network we are looking to make this a major national event over the next several years and assist this area of creative endeavour, which receives relatively little support and recognition in Australia.

It's only the beginning...

Presented in conjunction with Geelong by the Bay Tourism, *Circus Bites* took advantage of the National Circus Conference being held at GPAC in April.

This new and innovative program was well attended by the general public who took advantage of seeing some of the best exponents of physical theatre Australia has to offer. Building this event into a fully fledged festival along with our partners is high on the list of priorities for GPAC in 2006.



Goal 4

Ensure outstanding places and spaces

Once again our people are the backbone of the organisation and GPAC has strengthened its workforce creating new positions and recognising existing employee's skill base. Making a safe and effective workplace means maintaining our space and up - skilling our team. In 2004-05 over 240 training sessions took place providing our people with opportunities to grow and learn. Training sessions covered a variety of skills and areas including OH&S, audiovisual, customer service and hazard assessment sessions.

Another brick in the wall...

Extensive modifications and maintenance has been carried out around the buildings under the asset management program. Specific works to emergency lighting systems, fire doors, Alcoa studio floors and painting has been completed over the year.

The Creating Place & Space project continues. Works completed over the year for this project include a security system upgrade, Ford Theatre house lighting upgrade and safety improvements to the counterweight fly-system. As part of the Creating Place & Space project we improved the closed circuit video system to enable our stage door attendants view activity in backstage areas from their control point increasing both security and customer service.

Smooth operator...

Working closely together the Venue Operations team ensures all communication systems and procedures are in place for all events at GPAC. From initial enquiry, contract negotiations, planning and operating the event itself, through to post-event review the team prides itself in delivering the highest quality operational support to all venue hirers.

All venues continue to be well utilised for a diverse range of events, and although we reached our venue rental targets in the two theatres, we are looking forward to increased utilisation of the Blakiston Theatre in the coming financial year. A concentrated effort to program and attract product for this venue will be implemented and should see an improved result next year.

GPAC has provided venue management to the Costa Hall since 1996 and we entered into a new two-year contract during the course of last year.

Improvements to front of house operations, security, technical operations and infrastructure are already underway with the university purchasing a new-elevated work platform, adding to the attraction of this wonderful concert hall.

Change, change, change...

During the year a permanent restructure was implemented to the Venue Operations Department, involving the amalgamation of two key management roles, Technical Manager and the Venue Operations Manager. In support of this a Venue Operations administrative assistant was recruited to assist the existing team.

Recruiting two new head technicians to oversee lighting and sound, this restructure has been extremely successful, and with improvement to venue operation systems and procedures hirer and staff satisfaction has continued to be high.

A newly created position of Programming Coordinator will add depth to the programming of GPAC events and continue to build the Alcoa Education program to forge stronger links with local educators.

We have also continued to support school leavers again engaging an Administration and Marketing Trainee on a one year contract.

Satisfaction guaranteed...

Scoring over 99% in a recent survey our staff continue to serve the community to the very highest levels and the addition of two new cleaning staff to our existing team has ensured that our venues 'sparkle' for our patrons.

Occupational health and safety (OH&S)

GPAC has implemented an OH&S framework that ensures the safety of every employee. Our OH&S committee actively promotes workplace safety themes and has implemented new initiatives including OH&S awareness breakfasts and a reward system for employees who exceed expectations in workplace safety. An organisation-wide risk register was implemented in 2002 and continues to act as the conduit to identify, archive, manage and/or eliminate workplace risks. GPAC will continue to ensure that the workplace and employees operate within the OH&S framework.

Performance Indicator

	Target 2004-05	Actual 2004-05
Number of workplace injuries	0	2
Number of risks eliminated from the risk register	8	6
Number of OH&S committee meetings held	5	4



Tim Orton	Chair, Finance Subcommittee, Business Development and Marketing Subcommittee
Julie Dyer	Deputy Chair, Programming Subcommittee (Chair)
Janet Bond	(Incoming, term commenced 1 January 2005) Business Development and Marketing Subcommittee (Chair)
John Bugg	Audit Sub Committee (until December 2004)
Lynden Costin	Programming Subcommittee
Andrew Dunbabin	Finance Subcommittee (Chair), Audit Subcommittee
Richard East	Programming Subcommittee
Graeme Goldsworthy	(Outgoing, term concluded 31 December 2004) Finance Subcommittee, Business Development and Marketing Subcommittee, Audit Subcommittee
Simon Guthrie	(Incoming, term commenced 1 January 2005) Audit Subcommittee (Chair)
Sue Lansdell	(Incoming, term commenced 1 January 2005) Business Development and Marketing Subcommittee
Kate Torpey	Audit Subcommittee

Staff data

Employment type	2004-05				2003-04			
	Male	Female	Total	EFT	Male	Female	Total	EFT
Ongoing	9	17	26	16	5	15	20	16
Casual	19	34	53	13	17	33	50	11
Total	28	51	79	29	22	48	70	27

Anniversaries

During 2004-05 two employees joined the group of people who have been employed at GPAC for ten years or more.

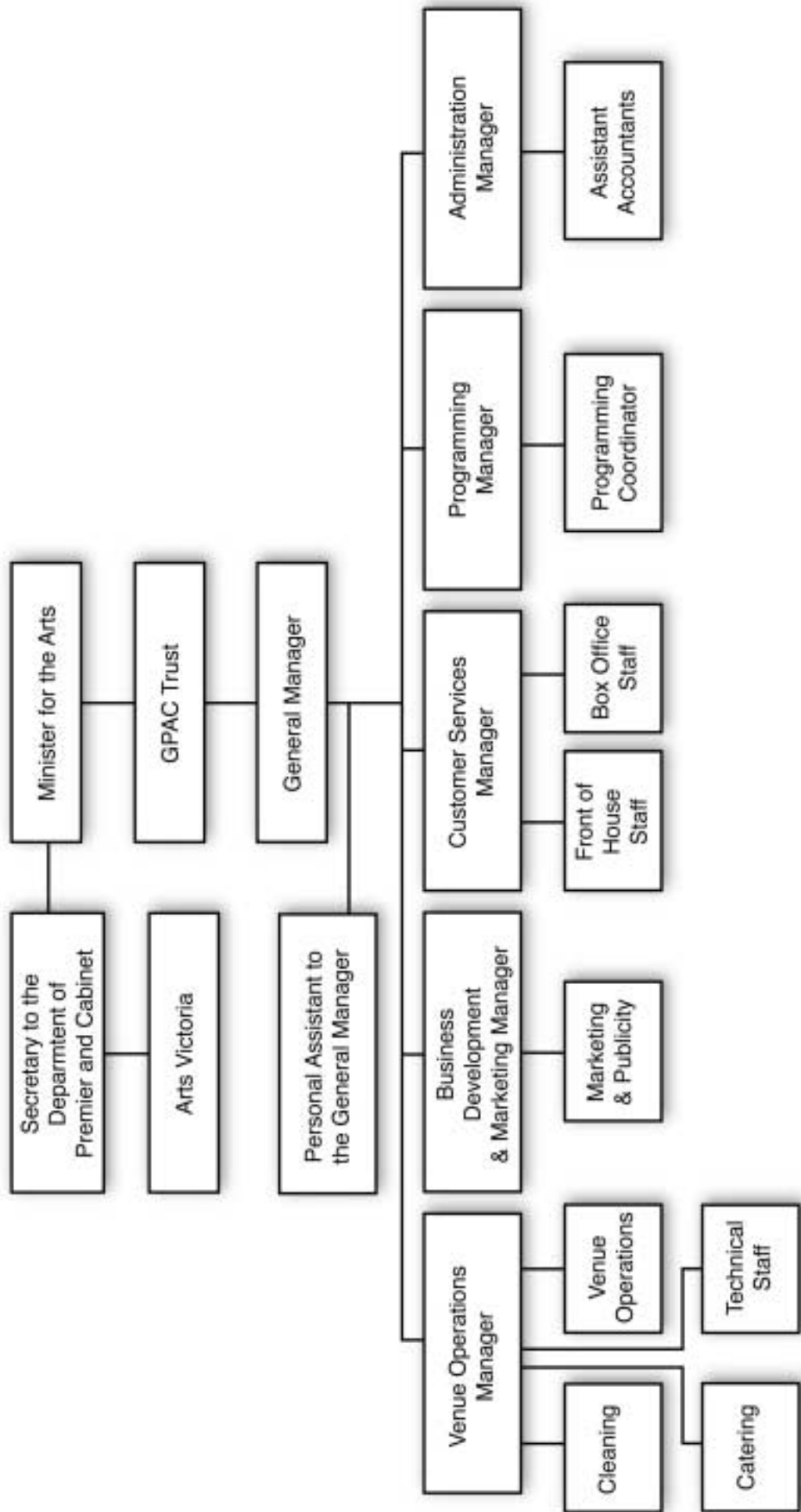
Laszlo Domonkos

Gillian Fillman

General Manager	Geoff Street	Sally Beck
Administration Manager	Tineke Barry	
Technical Manager	Jamie Stahl	
Venue Operations Manager	Jamie Stahl	Cathie Gearon
Business Development Manager	Julie Stefanoff	
Programming Manager	Robyn Birrell	
Customer Services Manager	Tina Rettke	
Marketing	Mollison Consulting, Brad Martin	
Publicity	Mollison Consulting, Lizzie Joyce	
Assistant Accountants	Wendy Jones	Helen Brown
Administration Staff	Lyndal Barry	
	Corinne Marriner	
Programming/Education Coordinator	Una McAlinden	Emma Dyer
Project Co-ordinators	Amanda LaBonte	Sue Evans-Atherton
Front of House Supervisor	Allanah Clifford	
Personal Assistant to the General Manager	Sarah Heywood	Duncan Esler
Administration and Marketing Trainee	Shanti Fagan	Olivia Mann
Head Technicians	Martin Schmidt	Michele Domonkos
	Donald Shaw	
Supervising Technicians	Laszlo Domonkos	Grant Lupton
Head Cleaner	Gordon Hutchinson	
Cleaning Staff	Debra Jones	Jacinta Egberts
	Kevin Pope	Johanna Torrance
Venue Operations Coordinator	Angela Blackney	
Venue Operations Assistant	Kelly Somes	
Assistant to Customer Services Manager	Kim Hodgkinson	
Box Office Staff	Kimberlee Bone	Julie Brylow
	Hayley Duffield	Jessica Fraser
	Karen Garratt	Ruth Sutherland
	Jenny Waugh	
Technical Staff	Peter Balfour	Alison Bartlett
	Simon Bray	Merryn Butterfield
	Lex DeVries	Nathan Gili
	Shane Haugh	Glen Hirst
	Vanessa Manteit	John Quick
Stage Door Staff	Keith Halfpenny	Marie Hutchinson
	Gill Morrison	Gerry Morrison
Front of House Staff	Mykel Brown	Brian Brylow
	Betty Clarke	Lynda Clifford
	Gillian Fillman	Maree Ford
	Val Foster	Ineke Geue
	Catherine Johnson	Lachlan Joyce
	Dianne Kibbis	Sandra Lovell
	Mark McCabe	Tobie Newman
	Carolyn O'Neill	Paula Potter
	Vicki Rigby	Eril Rankin-Stubblings
	Peter Treloar	Nola Wright
	Peter Wills	

Staff employed during 2004-05

Organisational chart



GPAC staff are actively involved in arts and community organisations and committees at a national, state and local level.

National

- Australia Council Theatre Board
- Australian Performing Arts Centres Association (APACA) – Executive Member
- Australian Presenters Group (APG)

State

- Arts Industry Council
- Arts Victoria Arts Portfolio CEO's Forum
- Arts Victoria Communications Managers Network
- Arts Victoria Risk Management Coordination Committee
- Box Office Managers Network
- Technical Managers Network
- Victorian Association Performing Arts Centres
- Victorian Council for the Arts

Local

- Bethany Board of Management
- Committee for Geelong
- Geelong by The Bay Tourism
- Geelong Chamber of Commerce
- Geelong Major Events Committee
- Geelong Regional Alliance (G21)
- United Way Allocations Committee

Performance Indicator	Target 2004-05	Actual 2004-05	% of target achieved 2004-05	Actuals 2003-04
Goal 1				
To develop arts and community				
Community arts buzz				
Number of partnership projects	5	8	160%	6
New programs	3	3	100%	2
Number of members, friends and volunteers	100	124	124%	165
Arts programs - the capital city experience				
GPAC theatre programs attendances	37,000	38,803	105%	27,561
GPAC education programs attendances	16,000	12,348	77%	10,194
Number of public programs	14	15	107%	13
Community access				
Value of sponsored venue rental & expenses	\$ 40,000	\$ 39,225	98%	\$ 31,341
Value of ticket give-aways	\$ 10,000	\$ 11,225	112%	\$ 16,314



gpa
geelong
performing
artscentre

Performance Indicator	Target 2004-05	Actual 2004-05	% of target achieved 2004-05	Actuals 2003-04
Goal 2				
To expand audiences and activities				
Maximum audience attendance				
Total attendance at GPAC	165,000	152,428	92%	141,382
comprising -				
GPAC theatre programs	37,000	38,803	105%	27,561
GPAC education programs	16,000	12,348	77%	10,194
Venue hire shows and events	112,000	101,277	90%	103,627
Maximum audience attendance by artform / event type				
Total attendances at GPAC	165,000	152,428	92%	141,382
comprising				
- Theatre		43,558		42,190
- Comedy		4,913		6,336
- Classes		21,577		14,434
- Dance		14,427		16,865
- Musical		16,572		21,576
- Film		3,197		3,062
- Concerts		24,149		16,568
- Seminars & Conferences		6,535		4,921
- Graduations & Awards		5,152		5,236
- Education		12,348		10,194
GPAC subscribers				
- Theatre Season subscribers	1,360	1,791	132%	1,541
- Family Magic subscribers	500	513	103%	578
- Musical Mornings Season 2 subscribers	650	704	108%	494
- Musical Mornings Season 1 subscribers	650	776	119%	564
GPAC education outreach program				
- Off-site attendances	2,000	1,300	65%	737
Maximum bright nights				
Venue hire income	\$ 260,000	\$ 271,705	105%	\$ 239,377
comprising -				
- GPAC programs	\$ 50,000	\$ 70,980	142%	\$ 57,189
- Hirers	\$ 210,000	\$ 200,725	96%	\$ 182,188
Number of performances	280	309	110%	265
Occupancy				
- Ford Theatre	65%	64%	98%	66%
- Blakiston Theatre	55%	46%	84%	53%
- Costa Hall	50%	26%	51%	31%
Happy customers and satisfied producers				
Customer satisfaction	95%	99%	104%	98%
Expanding our marketing reach				
Number of new names on database	7,000	4,793	68%	5,497
On-line access	35,000	65,697	188%	33,381

Performance Indicator	Target 2004-05	Actual 2004-05	% of target achieved 2004-05	Actuals 2003-04
Goal 3				
To contribute to our region's innovation				
Supporting innovative engagement in the arts				
New innovation programs	2	3	150%	New measure in 2004-05
Goal 4				
To ensure outstanding people and spaces				
Ensuring economic sustainability				
Total sponsorship income	\$ 274,682	\$ 287,561	105%	\$ 283,455
<i>comprising</i>				
- Cash	\$ 174,682	\$ 185,561	106%	\$ 182,455
- In-kind	\$ 100,000	\$ 102,000	102%	\$ 101,000
Progress of master plan	Development of business case	90%	90%	Strategic Facilities Plan completed
End of year financial result	Operating surplus	Achieved	Achieved	Operating deficit
Ensuring outstanding people				
Number of training sessions delivered	240	235	98%	237





GPAC Annual Report 2004-05



geelong
performing
artscentre

Summary of financial results with previous four year comparisons

Revenue in 000's	2005	2004	2003	2002	2001	2000
Revenue from ordinary activities	2,812	2,820	2,647	3,561	2,476	2,625
Expenses from ordinary activities	(2,742)	(2,494)	(2,594)	(2,350)	(2,686)	(2,212)
Operating surplus/(deficit) before provisions	70	326	53	1211	(210)	413
Depreciation	(318)	(338)	(317)	(311)	(518)	(553)
Employee entitlements	(17)	7	(21)	(11)	(54)	(16)
Results from ordinary activities surplus/(deficit)	(265)	(5)	(285)	889	(782)	(156)
Total assets	18,444	18,620	15,486	15,748	14,659	17,541
Total liabilities	781	691	754	732	531	577

Employment and Conduct Principles

Geelong Performing Arts Centre complies with the *Public Administration Act 2004(PAA)* and the public sector employment principals and public sector vales that state:

- Employment decisions are based on merit
- Employees are treated fairly and reasonably
- Equal employment opportunity is provided
- Employees have reasonable avenues of redress against unfair or unreasonable treatment

Geelong Performing Arts Centre operates a non-smoking workplace, encourages healthy eating and places emphasis on ensuring all staff receives training in all aspects of the arts industry.

Industrial Relations

No days were lost through industrial disputation.

Enterprise Partnership Agreement

Staff are employed under the Geelong Performing Arts Centre Enterprise Partnership Agreement, which incorporates the Performing Arts Centres Award 2001 and the Arts and Entertainment Administration Award 2001.

The third generation Geelong Performing Arts Centre Enterprise Agreement was

certified in the Australian Industrial Relations Commission and came into force on 30 March 2005 for a two year period. The agreement delivered an annual 3% wage increase, improved terms and conditions of employment and secured commitment to strategies which will deliver GPAC's vision and objectives.

Corporate Governance

The Trust was established by the Geelong Performing Arts Centre Trust Act 1980 No. 9406. The Minister responsible is *Mary Delahunty MP Minister for the Arts*.

The Act provides that the functions of the Trust shall be:

- to complete the construction of the Centre, which shall be known as the Geelong Performing Arts Centre
- to care for, improve and maintain the Centre
- to control and manage the Centre
- to present and produce theatrical performances, operas, plays, dramas, ballets and musical and other performances and entertainments of any kind whatsoever in the Centre and outside the Centre
- to promote the use of the Centre by persons and bodies whom the Trust consider suitable to use it
- to perform any other functions appropriate to the Centre as the Minister may approve

Trust subcommittees and terms of reference

Business Development and Marketing Sub-Committee

Graeme Goldsworthy (Chair, term concluded 31 Dec 2004), Janet Bond (Chair), Tim Orton, Sue Lansdell, Andrew Dunbabin (Term concluded December 2004)

The role of the committee is as follows:

1. to provide advice and guidance on fundraising and sponsorship strategy
2. to provide advice and guidance on public relations strategy
3. to provide advice and guidance on marketing and publicity strategy
4. to provide advice and guidance on the development of fundraising and public events
5. to review and monitor performance against annual fundraising and sponsorship targets
6. to advocate and promote GPAC in relevant business, government and community networks, represent GPAC at key functions and meetings and act as hosts at GPAC events and functions

Programming Sub-Committee

Julie Dyer (Chair), Richard East, John Bugg (Term concluded December 2004), Kate Torpey (Term concluded December 2004) Lynden Costin

The role of the committee is as follows:

1. the Committee should meet at key times throughout the year as required by the GPAC Trust and report back to the Trust at regular meetings.
2. the Committee will work in alignment with the Finance Committee and financial procedures to support the entrepreneurial programming of GPAC.
3. the Committee members will actively contribute to the priorities and direction of the Strategic Plan in the strategic areas of programming and audience development
4. the Committee members should help implement and deliver the Strategic Plan by advocacy, active participation, and reporting on community perceptions.

Audit Sub-Committee

Simon Guthrie (Appointed Chair 28 February 2005), John Bugg (Term concluded 31 December 2004), Andrew Dunbabin, Graeme Goldsworthy (Term concluded 31 December 2004), Kate Torpey (Appointed 28 February 2005)

The audit sub-committee advises the Trust on issues relating to management of risk, transactions with external parties and financial reporting obligations.

Internal Audit

- to establish an internal audit programme
- to review the internal auditing function including the degree of coordination with the external auditor
- to consider matters arising from the internal audit projects
- to evaluate effectiveness of the internal auditing function by reviewing its achievement of the agreed outcomes
- to comply with laws and regulations
- to consider relevant government policies
- to provide an independent reporting line to the General Manager
- to monitor the ethical standards of GPACT
- to consider risk management issues

External Audit

- to consider matters arising from the external audit
- to follow up the implementation of recommendations made by the external auditors

Financial Reporting

- to review the annual audited statements (including any accompanying management report) prior to their approval by the Trust.

Occupational Health and Safety

- to comply with laws and regulations
- to ensure a safe workplace for all employees and a safe venue for performers and patrons

Information Technology

- to monitor and review the suitability and regular upgrading of computer systems

Finance Sub-Committee

Andrew Dunbabin (Chair), Tim Orton, Graeme Goldsworthy (Term concluded 31 December 2005), Simon Guthrie (Appointed 28 February 2005)

The finance sub-committee advises the Trust on the most appropriate way to fulfil its responsibilities with regard to financial management, accounting and reporting practices as prescribed by the Geelong Performing Arts Centre Trust Act 1980 and the Financial Management Act 1994.

It meets on a monthly basis and makes recommendations to the Trust for approval regarding:

- Annual operating budget
- Programming budgets
- Capital expenditure priorities
- Monitoring of monthly financial result against budget
- Internal control relating to the finance system
- Pricing of services
- Cost effectiveness

Compliance with Building Act 1993

All building works undertaken by GPAC comply with current building regulations.

Compliance with National Competition Policy

The Trust is committed to the implementation of the Victorian Government's Competitive Neutrality Policy.

Implementation of the Victorian Industry Participation Policy (VIPP)

GPAC has not commenced or completed contracts to which the VIPP applied.

Consultancies

During the year ended 30 June 2005 GPACT engaged nine consultants, individually valued at less than \$100,000, at a total value of \$120,491. GPACT did not engage individual consultants valued in excess of \$100,000.

Correction of personal information

GPAC strives to keep all recorded personal information accurate. Under the Privacy Act, you have a right to seek access to information that GPAC holds about you and correct any parts that are inaccurate, incomplete or out of date.

If you wish to access the personal information that we hold about you, please set out your request in writing and forward to the Privacy Officer. In the interests of protecting the privacy of individuals about whom we hold personal information, we will require that you verify your identity. This can be done by enclosing a copy of a form of identification such as a current driver's licence or passport with your written request (this will be returned to you after your identity has been verified)

Cultural Diversity

As part of our commitment to cultural diversity GPAC has forged a partnership with Diversitat (formerly Geelong Ethnic Communities Council), which will see a community liaison officer working on projects aimed to develop increased awareness and engagement with local, culturally and linguistically, diverse communities in the Geelong Region.

Environmental

GPAC is aware of the governments 15% energy reduction target and the purchase of 5% Green Power for all Statutory Authorities. GPAC has identified this area in its Masterplan as an important aspect of the redevelopment plans which are currently being examined by Government via the 'gateway processes'

Fees and charges

Hiring charges and booking fees were increased to cover the increased cost of providing these services. Increases were made to the cost of venue labour in line with wage increases. When charging for services GPAC complies with National Competition Policy by charging fair market prices for all services provided.

Freedom of Information (FOI)

The Trust produces the following regular publications:

- Annual Report
- Fortnightly 'What's On' e-mail bulletins
- Bi-monthly 'Caught In The Act' newsletter

FOI requests should be directed to the General Manager, 50 Little Malop Street Geelong VIC 3220. In accordance with the *Freedom of Information Act 1982*, a \$20 application fee must accompany all requests.

The subject and the date range of the information sought should be indicated as precisely as possible. Where a request does not identify the document(s) requested, the applicant will be advised and given an opportunity to consult with officers in order to reformulate the request.

The types of documents that are not accessible under FOI are detailed in Part IV of the Freedom of Information Act 1982. Such documents identified in GPAC response to a request and reasons for the exempt status will be given. Under the Act an applicant can appeal a decision to Internal Review, which will be conducted by the Principal Officer. Further appeals to the Ombudsman or the Administrative Appeal Tribunal can be made under Part VI of the Act.

Other publications produced by the Trust are marketing materials for the Trust's annual entrepreneurial ventures, which are obtained from box office.

Charges for access to documents will be in accordance with the *Freedom of Information Act 1982*. The Act specifies that access to information be provided at the lowest reasonable cost.

Under the *Freedom of Information (Access Charges) Regulations 2004* the following charges will apply:

- application Fee: \$20.00 per application
- photocopy Fee: \$0.20 per A4 page
- search Fees (identification and location of documents): \$20.00 per hour or part of an hour
- supervision Fees (where a document is inspected at GPAC): \$5.00 per quarter hour or part quarter hour
- deposits (in cases where charges will be substantial): \$25.00 or 50% of the calculated charge, whichever is the lesser amount

Charges other than the application fee may be waived if the request is a routine request or if the request is for access to a document relating to the personal affairs of the applicant. The application fee may be waived or reduced if payment of the fee would cause hardship for the applicant.

It is the aim of the FOI to make the maximum amount of information available promptly and inexpensively. FOI requests should be as specific as possible so that the request can be processed efficiently.

Relevant information

The following information has been prepared and is retained by the Trust and can be made available to the Minister for the Arts, Members of Parliament and the public.

- (a) a statement that declarations of pecuniary interests have been duly completed by all relevant officers
- (b) details of shares held by a senior officer as nominee or held beneficially in a statutory authority or subsidiary
- (c) details of publications produced by the entity about the entity and the places where the publications can be obtained
- (d) details of changes in prices, fees, charges, rates and levies charged by the entity;
- (e) details of any major external reviews carried out on the entity
- (f) details of major research and development activities undertaken by the entity
- (g) details of overseas visits undertaken including a summary of objectives and outcomes of each visit
- (h) details of major promotional, public relations and marketing activities undertaken by the entity to develop community awareness of the entity and the services it provides
- (i) details of assessments and measures taken to improve the occupational health and safety of employees
- (j) a general statement on industrial relations within the entity and details of time lost through industrial accidents and disputes
- (k) a list of major committees sponsored by the entity, the purposes of each committee and the extent to which the purposes have been achieved.

Whistleblowers Protection Act 2001

GPAC complies with the requirements of the act and has implemented the Department of Premier and Cabinet's procedures under section 68 for handling disclosures under the *Whistleblowers Protection Act 2001*. As required by the legislation, these procedures are provided in the appendix to the annual report.

This section of the report contains information that is required to be published annually under section 104 of the *Whistleblowers Protection Act 2001* ('the Act').

For the year 2004-05:

GPAC has received no disclosures during the year

GPAC has not referred any disclosures to the Ombudsman for determination as to whether they are public interest disclosures during the year

The Ombudsman has not referred any disclosed matters to GPAC during the year

GPAC has not referred any disclosed matters to the Ombudsman to investigate during the year

Ombudsman has not taken over any investigation of disclosed matters from the GPAC during the year

GPAC has made no request under section 74 of the Act to the Ombudsman to investigate disclosed matters during the year

GPAC has not declined to investigate a disclosed matter during the year

There have been no disclosed matters that were substantiated on investigation. There has been no action required to be undertaken arising from an investigation, since there have been no investigations

The Ombudsman has not made any recommendation under the Act that relates to the GPAC.

The nominated Protected Disclosure Officer (PDO) is Simon Guthrie who can be contacted on 0418 583 581 or after hours on 03 5222 6552.



↓ GPAC and all other Bookings

↓ Ticketek Bookings

GPAC would like to thank the following for partnering us to bring the arts to Geelong

Government

GPAC gratefully acknowledges the State of Victoria for its generous support. We thank Mary Delahunty MP, Minister for the Arts and our local parliamentarians for their ongoing interest, encouragement and advocacy of GPAC.



Major Partner



Programs

Theatre Season

Education

Musical Mornings

Family Magic

Community Access



australia's aluminium since 1963



SENIORS CARD



Presenting Sponsors



Acts of Support



Green Room Club Corporate Members



Green Room Club Individual Members

Ms Roxanne Bennett and Mr Damien McMaster
 Mr Graeme Brown and Ms Nicole Kees
 Cr Val and Mr David Lawrence
 Dr Christopher and Mrs Lisa McGrath
 Mr David and Mrs Angela Smith

Mr Jason and Mrs Julie Boyle
 Mr Tufan Chakir and Ms Adrienne Stephens
 Dr Patrick and Mrs Deborah Lockie
 Drs James and Libby Magarey

Financial report

Notes	2005			2004		
	\$	\$	\$	\$	\$	\$
	Operations	Infrastructure	Total	Operations	Infrastructure	Total
Revenue from ordinary activities						
Government grants						
Department of Premier and Cabinet	2	731,559	731,559	747,441	364,000	1,111,441
Department of Education		31,322	31,322	31,323		31,323
Trading income						
Box office	3	656,062	656,062	444,352		444,352
Booking fees		284,518	284,518	292,612		292,612
Venue hire	4	677,457	677,457	603,861		603,861
Sponsorship and fundraising		185,560	185,560	182,405		182,405
Catering commission		39,656	39,656	23,768		23,768
Management fees		50,140	50,140	45,585		45,585
Outside of operating activities						
Interest		68,913	68,913	60,294		60,294
Proceeds on disposal of assets	5		37,455			37,455
Other		49,492	49,492	24,725		24,725
Total revenue from ordinary activities		2,774,679	37,455	2,812,134	364,000	2,820,366
Expenses from ordinary activities						
Human resources						
Salaries and related		1,407,976	1,407,976	1,319,561		1,319,561
Consultants		120,491	120,491	103,414		103,414
Staff development		33,027	33,027	29,063		29,063
Trading						
GPAC programs	6	486,218	486,218	402,347		402,347
Education programs	6	35,806	35,806	30,940		30,940
Marketing		25,633	25,633	22,624		22,624
Operating		121,801	121,801	119,613		119,613
Buildings and facilities						
Repairs and maintenance		172,466	172,466	133,863		133,863
Utilities		120,125	120,125	109,599		109,599
Depreciation			317,829		338,357	338,357
Written down value of asset disposals	5		20,109		7,732	7,732
Administration and finance						
Administration		108,830	108,830	105,379		105,379
Information technology		19,051	19,051	12,672		12,672
Audit		13,000	13,000	12,650		12,650
Bad and doubtful debts		-	-	5,493		5,493
Insurance		69,911	69,911	68,064		68,064
Lease expenses		4,728	4,728	4,728		4,728
Total expenses from ordinary activities		2,739,063	337,938	3,077,001	346,089	2,826,099
Result from ordinary activities (surplus/(deficit))		35,616	(300,483)	(264,867)	17,911	(5,733)
Net increase in asset revaluation reserve	7				3,202,858	3,202,858
Total changes in equity other than those resulting from transactions with the Victorian Government in its capacity as owner		35,616	(300,483)	(264,867)	3,220,769	3,197,125

The above statement of financial performance should be read in conjunction with the accompanying notes

	Notes	2005 \$	2004 \$
Current assets			
Cash assets	13a)	1,174,141	1,241,004
Receivables	8	150,821	132,146
Inventories		2,000	2,000
Other	9	88,857	101,694
Total current assets		1,415,819	1,476,844
Non-current assets			
Property plant and equipment	10	17,028,545	17,143,197
Total non-current assets		17,028,545	17,143,197
Total assets		18,444,364	18,620,041
Current liabilities			
Payables	11	565,321	493,402
Provisions	12	171,152	153,034
Total current liabilities		736,473	646,436
Non-current liabilities			
Provisions	12	44,192	45,039
Total non-current liabilities		44,192	45,039
Total liabilities		780,665	691,475
Net assets		17,663,699	17,928,566
Equity			
Contributed capital	7a)	6,749,905	6,749,905
Accumulated surplus/(deficit)	7c)	333,563	598,430
Reserves	7b)	10,580,231	10,580,231
Total equity	7d)	17,663,699	17,928,566

The above statement of financial position should be read in conjunction with the accompanying notes

	Notes	2005 \$	2004 \$
<i>Cash flows from operating activities</i>			
Cash receipts from customers		1,924,210	1,669,355
Government grants		762,881	1,142,764
Interest received		68,913	60,294
Payments to suppliers and employees		(2,637,036)	(2,587,074)
Net cash inflow from operating activities	13b)	118,968	285,339
<i>Cash flows from investing activities</i>			
Payments for property plant and equipment		(223,286)	(128,660)
Proceeds from sale of property plant and equipment		37,455	-
Net cash outflow from investing activities		(185,831)	(128,660)
Net increase(decrease) in cash held		(66,863)	156,679
Cash at beginning of year		1,241,004	1,084,325
Cash at end of year	13a)	1,174,141	1,241,004

The above statement of cash flows should be read in conjunction with the accompanying notes

1 ACCOUNTING POLICIES

a) Basis of preparation

This general-purpose financial report has been prepared in accordance with the Financial Management Act 1994, Australian Accounting Standards Board and Urgent Issues Group Consensus Views. It is prepared in accordance with the historical cost convention, except for certain assets and liabilities which, as noted, are at valuation. The accounting policies adopted and the classification and presentation of items, are consistent with those of the previous year, except where a change is required to comply with an Australian accounting standard or Urgent Issues Group Consensus View, or an alternative accounting policy permitted by an Australian accountant standard, is adopted to improve the relevance and reliability of the financial report. Where practicable, comparative amounts are presented and classified on a basis consistent with the current year.

b) Property plant and equipment

Subsequent to the initial recognition as assets, non-current physical assets, other than plant and equipment are measured at fair value. Plant and equipment is measured at cost. Revaluations are made with sufficient regularity to ensure that the carrying amount of each asset does not vary materially from its fair value at the reporting date. Revaluations are assessed annually and supplemented by independent assessments, at least every three years. Land and buildings were revalued by Landlink Property Group, valuers approved by the Valuer-General, at 30 June 2004 on the basis of the market value of land and depreciated replacement cost of buildings. Building additions are valued at cost. The valuation of land and buildings is in accordance with the Victorian Government Policy – Revaluation of Non-Current Physical Assets.

Depreciation is calculated using the straight line basis to write off the net cost of each item of property, plant and equipment (excluding land) over its expected useful life. Historic buildings have an expected remaining useful life of 66 years. Other buildings have an expected remaining useful life of 76 years. Plant and equipment items have expected useful lives ranging from 3 to 20 years. Depreciation rates have not altered from the previous year.

c) Inventories

Stocks of lighting consumables are valued on the weighted average cost basis and are carried at the lower of cost and net realisable value.

d) Long service leave

Provision for long service leave is made for staff in accordance with the terms of the relevant awards. The liability represents the present value of the estimated future cash outflows to be made by the employer resulting from employees' services up to balance date. Liabilities for long service leave which are not expected to be settled within twelve months are discounted using rates supplied by the Department of Treasury and Finance. In determining the liability for long service leave, consideration has been given to future increases in wage and salary rates and GPACT's experience with staff departures. Related on-costs have also been included in the liability.

e) Annual leave

Provision has been made in the financial statements as a current liability for all outstanding annual leave as at balance date. Annual leave is provided in accordance with relevant Awards. The amount unpaid at balance date represents the amount that GPACT has a present obligation to pay resulting from employees' services provided up to the balance date. The provision has been calculated at nominal amounts based on the amount expected to be paid when the liability is settled.

f) Sick leave

No provision is made for sick leave as there is no liability to pay for accumulated leave and the sick leave to be taken in future reporting periods is not expected to be greater than entitlements which are expected to accrue in those periods.

g) Revenue recognition

Revenue represents amounts earned from sales of products or services, for completed programs and hire of venues, interest and other items. Government grants are recognised on receipt except where they are for specific programs whereby they are recognised at time of performance. Income from the hire of venues is recognised when payments are due. Booking fees are recognised as income when tickets are sold. Income from the sale of tickets is recognised when the shows have been performed. Rental income for commercial and retail areas is recognised monthly in advance. Bar and catering services are contracted to an independent operator. GPACT receives a return based on a percentage of gross turnover. This revenue is recognised on a monthly basis.

h) Government contributions

Pursuant to a Government directive under the Financial Management Act 1994, capital contributions are treated as revenue.

i) Contributed capital

Consistent with UIG Abstract 38 Contributions by Owners Made to Wholly-Owned Public Sector Entities appropriations for additions to net assets have been designated as contributed capital. Other transfers that are in the nature of contributions or distributions have also been designated as contributed capital.

j) Leases

Lease payments for operating leases, where substantially all the risks and benefits remain with the lessor, are charged as expenses in the periods in which they are incurred.

k) Receivables

Trade receivables are recognised and carried at original invoice amount less a provision for any uncollectible debts. An estimate for doubtful debts is made when collection of the full amount is no longer probable. Bad debts are written off as incurred.

l) Payables

Liabilities for trade creditors and other amounts are carried at cost which is the fair value of the consideration to be paid in the future for goods and services received, whether or not billed to GPACT.

m) Goods and services tax

Revenues, expenses and assets are recognised net of the amount of GST except:

- where the GST incurred on the purchase of goods and services is not recoverable from the taxation authority, in which case the GST is recognised as part of the acquisition of the asset or as part of the expense item as applicable; and
- Receivables and payables are stated with the amount of GST included.

The net amount of GST recoverable from, or payable to, the taxation authority is included as part of receivables or payables in the Statement of Financial Position.

Cash flows are included in the Statement of Cash Flows on a gross basis and the GST component of cash flows arising from investing and financing activities, which is recoverable from, or payable to, the taxation authority are classified as operating cash flows.

Commitments and contingencies are disclosed net of the amount of GST recoverable from, or payable to the taxation authority.

n) Superannuation

All superannuation contributions are expensed in the Statement of Financial Performance. A total of \$106,108 was contributed to a number of superannuation funds. GPACT has no loans from superannuation funds.

o) Presentation currency

The presentation currency of the entity is the Australian dollar.

p) Rounding of amounts

Amounts in the financial report have been rounded to the nearest dollar.

	2005 \$	2004 \$
2 Department of Premier and Cabinet		
Current		
Operations	720,000	692,000
Other		
Playbox Theatre Touring Grant	-	43,640
Guarantee Against Loss	11,559	11,801
	731,559	747,441
Capital		
Creating Place and Space	-	364,000
	731,559	1,111,441

3 Box office

Box office	656,062	444,352
-------------------	----------------	----------------

GPACT presented 42 productions and projects (2004 – 40) during the period covered by these accounts covering both GPAC and education programs.

The Theatre Season program presented 8 productions comprising 40 performances (2004 – 7 productions comprising 36 performances) with 16,093 paid attendances (2004 – 9,872) generating box office income of \$420,455 (2004 \$263,734).

The increase in paid attendances was driven by:

- An increase in the number of tickets offered for sale through greater utilisation of the Ford Theatre with an average capacity of 715 seats compared to the Blakiston Theatre with an average capacity of 346.
- An increase in Theatre Season subscribers – 1,791 (2004 – 1,541)

The Musical Mornings program presented 10 productions comprising 20 performances (2004 – 10 productions comprising 10 performances) with 11,326 paid attendances (2004 – 7,231) generating box office income of \$110,868 (2004 \$67,730).

The increase in paid attendances was driven by:

- An increase in the number of tickets offered for sale due to an increase in the number of performances

4 Venue Hire

Venue rental		
Ford theatre	98,266	84,986
Blakiston theatre	20,805	20,189
Foyer, gallery, studios	49,382	47,583
Rental income – commercial and retail areas	32,349	29,432
Venue labour and other recoveries	476,655	421,671
	677,457	603,861

5 Asset disposals

Proceeds on disposal	37,455	-
Written down value	(20,109)	(7,732)
Profit (loss) on disposal	17,346	(7,732)

6 Intra-entity charges

GPACT eliminates the effect of intra-entity charges from the financial report. Intra-entity charges apply to GPAC programs and Education programs to reflect the full cost of presenting those programs. The impact of eliminating intra-entity charges is:

- To reduce the cost of GPAC programs from the full cost of \$686,083 (2004 \$554,022) by intra-entity charges of \$199,865 (2004 \$151,675) to give a net cost of \$486,218 (2004 \$402,347).
- To reduce the cost of Education programs from the full cost of \$71,127 (2004 \$65,247) by intra-entity charges of \$35,321 (2004 \$34,307) to give a net cost of \$35,806 (2004 \$30,940).

Total intra-entity charges of \$235,186 (2004 \$185,982) comprise venue hire costs of \$221,041 (2004 \$176,902), booking fees of \$12,992 (2004 \$9,080) and other income of \$1,153 (2004 \$Nil).

	2005 \$	2004 \$
7 Contributed capital, reserves and total equity		
a) Contributed capital		
Balance 1 July	6,749,905	6,749,905
Capital contributions from the Victorian State Government	-	-
Balance 30 June	6,749,905	6,749,905
b) Reserve – asset revaluation		
Balance 1 July	10,580,231	7,377,373
Revaluation increment of land and buildings	-	3,202,858
Balance 30 June	10,580,231	10,580,231
c) Accumulated surplus		
Balance 1 July	598,430	604,163
(Deficit)	(264,867)	(5,733)
Balance 30 June	333,563	598,430
d) Total equity		
Balance 1 July	17,928,566	14,731,441
Total changes in equity recognized in the Statement of Financial Performance	(264,867)	3,197,125
Balance 30 June	17,663,699	17,928,566

e) Nature and purpose of reserves**Asset revaluation reserve**

The asset revaluation reserve is used to record increments and decrements on the revaluation of non-current assets, as described in accounting policy note 1b).

8 Receivables

Trade debtors	133,441	131,073
Allowance for doubtful debts	(1,579)	(5,038)
Sundry debtors	18,959	6,111
	150,821	132,146

9 Other assets

Prepayments	88,857	101,694
-------------	--------	---------

10 Property plant and equipment

Land at independent valuation 2004	2,600,000	2,600,000
Buildings at independent valuation 2004	13,329,680	13,329,680
Building improvements at independent valuation 2004	200,000	200,000
Building improvements at cost	173,622	-
Less accumulated depreciation	(182,453)	-
	13,520,849	13,529,680
Plant and equipment at cost	1,404,555	1,378,096
Less accumulated depreciation	(496,859)	(364,579)
	907,696	1,013,517
Total property plant and equipment	17,028,545	17,143,197

Reconciliations of the carrying amounts of each class of property plant and equipment at the beginning and end of the current financial year are set out below.

	Land	Buildings	Plant and equipment	Total
Carrying amount at 1 July 2004	2,600,000	13,529,680	1,013,517	17,143,197
Additions	-	173,622	49,664	223,286
Disposals	-	-	(20,109)	(20,109)
Depreciation	-	(182,453)	(135,376)	(317,829)
Carrying amount at 30 June 2005	2,600,000	13,520,849	907,696	17,028,545

Property plant and equipment subject to operating leases

	Independent valuation 2004	Accumulated depreciation	Depreciation expense for the year
Building Historical buildings (Zone A)	1,996,000	-	30,242
		2005	2004
		\$	\$

11 Payables

Current		
Trade creditors	213,354	157,951
Tickets sold in advance	224,518	246,334
Income in advance	100,441	78,554
GST and PAYG liability	27,008	10,563
	565,321	493,402

12 Provisions

Current		
Annual Leave	93,580	72,002
Long Service Leave	77,572	81,032
	171,152	153,034
Non-current		
Long Service Leave	44,192	45,039
Aggregate carrying amount of provisions	215,344	198,073

Movements in provisions during the current financial year are set out below.

	Annual leave	Long service leave	Total
Carrying amount at 1 July 2004	72,002	126,071	198,073
Leave accrued	80,717	16,479	97,196
Leave taken	(59,139)	(20,786)	(79,925)
Carrying amount at 30 June 2005	93,580	121,764	215,344

13 Notes to the statement of cash flows**a) Reconciliation of cash**

For the purpose of the statement of cash flows, cash includes cash on hand and at bank and short term deposits, at call net of outstanding bank overdrafts. Cash as at the end of the year in the statement of cash flows is reconciled to the related items in the balance sheet as follows:

Cash on hand	2,300	2,350
Cash at bank	226,341	210,043
Term deposits	945,500	1,028,611
	1,174,141	1,241,004

b) Reconciliation of result from ordinary activities to net cash inflow(outflow) from operating activities

Result from ordinary activities	(264,867)	(5,733)
Add(less) non-cash items		
(Profit)loss on sale of assets	(17,346)	7,732
Depreciation	317,829	338,357
Changes in operating assets and liabilities		
Increase(decrease) in payables	71,919	(56,067)
Increase(decrease) in provisions	17,271	(6,637)
(Increase)decrease in receivables	(18,675)	52,047
Decrease(increase) in other assets	12,837	(44,360)
Net cash inflow(outflow) from operating activities	118,968	285,339

14 (a) Operating lease commitments

Lease commitments for non-cancellable operating lease payable.

Within one year	3,940	4,728
Later than one year but not later than five years	-	3,940
	3,940	8,668

14 (b) Operating lease receivables

Lease payments receivable from leasing out office space and from shop rentals

Within one year	18,722	11,156
Later than one year but not later than five years	-	2,543
	18,722	13,699

15 Contingent liabilities

There are no contingent liabilities.

16 Unspent government capital grants

At 30 June 2005 GPACT holds \$369,611 in unspent capital grants, comprising \$184,111 relating to the Creating Place and Space grant and \$185,500 relating to Disability Access. These funds must be spent on capital assets relating to building safety and disability access in accordance with the terms and conditions of the grant agreements.

17 Committed capital expenditure

On 8 September 2005 GPACT entered into a contract with Max Findlay & Associates for building works to the value of \$168,200, to be funded from unspent capital grants comprising the Creating Place and Space grant and Disability Access grant.

18 Responsible persons

The Minister responsible for GPACT is the Honourable Mary Delahunty MP, Minister for the Arts.

The names of responsible persons who were Trust members at any time during the financial year are:

	Position	Appointment status
Tim Orton	Chair	On-going appointment
Julie Dyer	Deputy Chair, Chair Programming Subcommittee	On-going appointment
John Bugg	Chair Audit Subcommittee	On-going appointment Position as Chair of Audit Subcommittee concluded 31 December 2004
Simon Guthrie	Chair Audit Subcommittee, Finance Subcommittee	Term commenced 1 January 2005
Andrew Dunbabin	Chair Finance Sub-committee, Audit Subcommittee	On-going appointment
Janet Bond	Chair Business Development and Marketing Subcommittee	Term commenced 1 January 2005
Graeme Goldsworthy	Audit Subcommittee, Finance Subcommittee, Business Development Subcommittee	Term concluded 31 December 2005
Richard East	Programming Subcommittee	On-going appointment
Lynden Costin	Programming Subcommittee	On-going appointment
Kate Torpey	Audit Subcommittee	On-going appointment
Sue Lansdell	Business Development and Marketing Subcommittee	Term commenced 1 January 2005

The names of persons who were responsible persons at any time during the financial year other than Trust members are:

Sally Beck	General Manager	On leave from 29 April 2005
Geoff Street	General Manager	Commencing 29 April 2005

Remuneration of responsible persons

No remuneration was paid to any responsible person who is a Trust member. The Minister's remuneration is disclosed in the financial statements of the Department of Premier and Cabinet.

No executive officer received remuneration over \$100,000.

Retirement benefits

No retirement benefits were paid by the reporting entity in connection with the retirement of responsible persons.

Other transactions of responsible persons and their related entities

Business transactions were conducted with the organization, The Courthouse, owned by the City of Greater Geelong, of which Ms Lynden Costin is the General Manager. The transactions included venue rental charges made by The Courthouse to GPACT in the amount of \$758 (2004 \$1,544) and venue charges made by GPACT to The Courthouse of \$49 (2004 \$192).

Business transactions were conducted with the organization, WHK Day Neilson, of which Mr Andrew Dunbabin is a partner. The transactions included box office income of \$2,829 (2004 Sponsorship income \$5,000) paid to GPACT by WHK Day Neilson.

The above transactions were undertaken in the ordinary course of business and were at arms length and at normal commercial terms.

19 Financial Instruments

a) Terms conditions and accounting policies

GPACT’s accounting policies including terms and conditions of each material class of financial asset, financial liability, both recognised and unrecognised at balance date, are as follows:

Recognised Financial Instruments	Note Ref	Accounting Policy	Terms and Conditions
(i) Financial assets			
Cash assets	12a)	Cash and Bank deposits are carried at principal amounts. Interest is recognised as it is earned.	All cash and bank balances are at call and have an effective interest rate of 5.2%.
Receivables		Assets are recognised for amounts to be received in the future for services provided to members.	Terms are normally ‘Payment within 30 days’. Interest may be charged on late payment at the discretion of the Trust at 13.2%
(ii) Financial Liabilities			
Payables	9	Liabilities are recognised for amounts to be paid in the future for goods and services received, whether or not billed to the Trust.	Trade liabilities are normally settled on 30 day terms

b) Interest rate risk

GPACT’s exposure to interest rate risks and the effective interest rates of financial assets and financial liabilities, both recognised and unrecognised are as follows

Financial Instruments	Floating interest rate		Non-interest bearing		Total carrying amount as per statement of financial performance		Weighted average effective interest rate	
	2004/05	2003/04	2004/05	2003/04	2004/05	2003/04	2004/05	2003/04
(i) Financial assets								
Cash assets	1,174,141	1,241,004			1,174,141	1,241,004	5.2%	5.2%
Receivables			150,821	132,146	150,821	132,146	N/A	N/A
Total financial assets					1,324,962	1,373,150		
(ii) Financial liabilities								
Payables			565,321	493,402	565,321	493,402	N/A	N/A
Total financial liabilities					565,321	493,402		

c) Credit Risk

The maximum exposure to credit risk, excluding the value of any collateral or other security, at balance date to recognised financial assets is the carrying amount, net of any provisions of doubtful debts, as disclosed in the balance sheet and notes to the financial statements.

GPACT does not have any material credit risk to any single debtor or group of debtors under financial instruments.

d) Net fair values

The net fair value of GPACT’s financial assets and financial liabilities are not expected to be significantly different from each class of asset and liability as disclosed above and recognised in the balance sheet as at 30 June 2005.

20 Superannuation

GPACT makes superannuation contributions in respect of its employees to the following superannuation funds in the accumulation and defined benefits categories of membership:

AMP Life Limited
 Asteron
 Australian Retirement Fund
 Combined Fund Pty Ltd
 Commonwealth Bank Retirement fund
 Host Plus Pty Ltd
 Just Pty Ltd
 Local Authorities Superannuation Fund (Vision Super)
 Macquarie Super Manager Account
 MLC Limited
 MLC Master Key Business Super
 UniSuper

Accumulation category of membership

In the accumulation category of membership superannuation funds receive employer and employee contributions on a progressive basis. Employer contributions are based on a fixed percentage of employee earnings (9% as required under Superannuation Guarantee Legislation). No further liability accrues to the employer as the superannuation benefits accruing to employees are represented by their share of the net assets of the applicable superannuation fund.

Defined benefits category of membership

GPACT makes employer contributions to the defined benefits category of Local Authorities Superannuation Fund (Vision Super) at rates determined by the Trustee on the advice of Vision Super's actuary. On the basis of the results of the most recent full actuarial investigation conducted by the fund's actuary as at 31 December 2002, the Trustee has determined that GPACT should make the following contributions:

- 9.25% of member's salaries (9.25% in 2004)
- the difference between resignation and retrenchment benefits paid to its retrenched employees (same as 2004)
- GPACT's share of the funding shortfall in Vision Super's Defined Benefit Plan of \$127m at 31 December 2002. GPACT's share was \$53,840 which has been paid in full. The funding or 'actuarial' shortfall is the amount by which the current value of assets plus expected future contributions is less than the value of expected futures benefits and expenses. The Vision Super Defined Benefit Plan is operated as a mutual plan.

Vision Super's liability for accrued benefits was determined in the 31 December 2002 actuarial investigation pursuant to the requirements of Australian Accounting Standard AAS25 as follows:

	31 December 2002
	\$'000
Net market value of assets	2,013,748
Accrued benefits (per accounting standards)	2,085,204
Difference between assets and accrued benefits	(71,456)
Vested benefits	2,013,156

Details of contributions paid to superannuation funds during the year and contributions payable at 30 June 2005 are as follows:

	2005	2004
Contributions paid to superannuation funds	105,378	99,909
Contributions payable to superannuation funds	730	-

21 Impacts of adopting AASB 1047 equivalents to IASB standards

Following the adoption of Australian equivalents to International Financial Reporting Standards (A-IFRS), GPECT will report for the first time in compliance with A-IFRS when results for the financial year ended 30 June 2006 are released.

It should be noted that under A-IFRS, there are requirements that apply specifically to not-for-profit entities that are not consistent with IFRS requirements. GPECT is established to achieve the objectives of government in providing services free of charge or at prices significantly below their cost of production for the collective consumption by the community, which is incompatible with generating profit as a principal objective. Consequently, where appropriate, GPECT applies those paragraphs in accounting standards applicable to not-for-profit entities.

An A-IFRS compliant financial report will comprise a new statement of changes in equity in addition to the three existing financial statements, which will all be renamed. The Statement of Financial Performance will be renamed as the Operating Statement, the Statement of Financial Position will revert to its previous title as the Balance Sheet and the Statement of Cash Flows will be simplified as the Cash Flow Statement. However, for the purpose of disclosing the impact of adopting A-IFRS in the 2004-05 financial report, which is prepared under existing accounting standards, existing titles and terminologies will be retained.

With certain exceptions, an entity that has adopted A-IFRS must record transactions that are reported in the financial report as though A-IFRS had always applied. This requirement also extends to any comparative information included within the financial report. Most accounting policy adjustments to apply A-IFRS retrospectively will be made against accumulated funds at the 1 July 2004 opening balance sheet date for the comparative period. The exceptions include deferral until 1 July 2005 of the application and adjustments for:

- AASB 132 Financial Instruments: Disclosure and Presentation;
- AASB 139 Financial Instruments: Recognition and Measurement;

The comparative information for transactions affected by these standards will be accounted for in accordance with existing accounting standards.

GPECT has taken the following steps in managing the transition to A-IFRS and has achieved the following scheduled milestones:

- established a steering committee to oversee the transition to and implementation of the A-IFRS;
- established an A-IFRS project team to review the new accounting standards to identify key issues and the likely impacts resulting from the adoption of A-IFRS and any relevant Financial Reporting Directions as issued by the Minister for Finance;
- participated in an education and training process to raise awareness of the changes in reporting requirements and the processes to be undertaken; and
- initiated reconfiguration and testing of user systems and processes to meet new requirements.

This financial report has been prepared in accordance with current Australian accounting standards and other financial reporting requirements (Australian GAAP). GPECT is still in the process of completing its evaluation of policy alternatives and business impact analysis relating to the differences between Australian GAAP and A-IFRS. To date there have been no material impacts identified relating to GPECT's financial position or financial performance.

The actual effects of transition to A-IFRS may differ from the estimates disclosed due to:

- change in facts and circumstances;
- ongoing work being undertaken by the A-IFRS project team;
- potential amendments to A-IFRS and Interpretations; and
- emerging accepted practice in the interpretation and application of A-IFRS and UIG Interpretations.

**GEELONG PERFORMING ARTS CENTRE TRUST
CHAIRMAN'S, ACCOUNTABLE OFFICER'S, CHIEF FINANCE AND
ACCOUNTING OFFICER'S DECLARATION**

We certify that the attached financial statements for Geelong Performing Arts Centre Trust have been prepared in accordance with Standing Direction 4.2 of the Financial Management Act 1994, applicable Financial Reporting Directions, Australian accounting standards and other mandatory professional reporting requirements.

We further state that, in our opinion, the information set out in the statement of financial performance, statement of financial position, statement of cash flows and notes to and forming part of the financial statements, presents fairly the financial transactions during the year ended 30 June 2005 and financial position of Geelong Performing Arts Centre Trust as at 30 June 2005.

We are not aware of any circumstances which would render any particulars included in the financial statements to be misleading or inaccurate.



Tim Orton
Chairman of the Trust



Geoff Street
General Manager and Accountable Officer



Tineke Barry
Administration Manager and Chief Finance and Accounting Officer

23 September 2005



AUDITOR GENERAL
VICTORIA

REPORT OF AUDITOR-GENERAL'S DELEGATE

TO THE MEMBERS OF THE PARLIAMENT OF VICTORIA,
THE RESPONSIBLE MINISTER AND THE MEMBERS OF THE
GEELONG PERFORMING ARTS CENTRE TRUST

Scope

The Financial Report

The accompanying financial report for the year ended 30 June 2005 of the Geelong Performing Arts Centre consists of, statement of financial performance, statement of financial position, statement of cashflows, notes to and forming part of the financial report, and the supporting declaration.

Members' Responsibility

The Members of the Geelong Performing Arts Centre Trust are responsible for:

- the preparation and presentation of the financial report and the information it contains, including accounting policies and accounting estimates
- the maintenance of adequate accounting records and internal controls that are designed to record its transactions and affairs, and prevent and detect fraud and errors.

Audit Approach

As required by the *Audit Act 1994*, an independent audit has been carried out under the delegated authority provided by the Auditor-General in order to express an opinion on the financial report. The audit has been conducted in accordance with Australian Auditing Standards to provide reasonable assurance as to whether the financial report is free of material misstatement.

The audit procedures included:

- examining information on a test basis to provide evidence supporting the amounts and disclosures in the financial report
- assessing the appropriateness of the accounting policies and disclosures used, and the reasonableness of significant accounting estimates made by the members
- obtaining written confirmation regarding the material representations made in conjunction with the audit
- reviewing the overall presentation of information in the financial report.

These procedures have been undertaken to form an opinion as to whether the financial report is presented in all material respects fairly in accordance with Accounting Standards and other mandatory professional reporting requirements in Australia, and the financial reporting requirements of the Financial Management Act 1994, so as to present a view which is consistent with my understanding of the Geelong Performing Arts Centre Trust's financial position, and its financial performance and cash flows.

The audit opinion expressed in this report has been formed on the above basis.



AUDITOR GENERAL
VICTORIA

Independence

The Auditor-General's independence is established by the *Constitution Act 1975*. The Auditor-General is not subject to direction by any person about the way in which his powers are to be exercised. The Auditor-General and his staff and delegates comply with all applicable independence requirements of the Australian accounting profession.

Audit Opinion

In my opinion, the financial report presents fairly in accordance with applicable Accounting Standards and other mandatory professional reporting requirements in Australia, and the financial reporting requirements of the Financial Management Act 1994, the financial position of The Geelong Performing Arts Centre Trust as at 30 June 2005 and its financial performance and cash flows for the year then ended.

J. Pasias

Partner

PKF Chartered Accountants

Delegate of J.W Cameron

Auditor-General

MELBOURNE

23 September 2005

Ministerial Direction	Description	Page
Charter and purpose		
FRD 22	Manner of establishment and the relevant Minister	30
FRD 22	Objectives, functions, powers and duties	30
FRD 22/SD4.2(g)	Nature and range of services provided	3-27
Management and structure		
FRD 22	Organisational structure	22
Financial and other information		
FRD 22	Statement of workforce data and merit and equity	20,30
FRD 22	Summary of the financial results for the year with comparative information for the preceding four reporting periods	30
FRD 22	Significant changes in financial position during the year	n/a
FRD 22	Operational and budgetary objectives and performance against objectives	24-27
FRD 22	Major changes or factors affecting achievement	n/a
FRD 22	Subsequent events	n/a
FRD 22	Application and operation of Freedom of Information Act 1982	33
FRD 22	Compliance with building and maintenance provisions of Building Act 1993	32
FRD 22	Statement on National Competition Policy	32
FRD 22	Details of consultancies over \$100,000	n/a
FRD 22	Details of consultancies under \$100,000	32
FRD 12	Disclosure of major contracts	46
FRD 22	Statement of availability of other information	34
FRD 22	Occupational Health and Safety	19
FRD 25	Victorian Industry Participation Policy disclosures	32
Financial Statements		
<i>Financial statements required under Part 7 of the FMA</i>		
SD42(a)	Compliance with Australian accounting standards, other authoritative pronouncements and Financial Management Act 1994 directions	41
SD4.2(b)	Statement of financial performance	38
SD4.2(b)	Statement of financial position	39
SD4.2(b)	Statement of cash flows	40
SD4.2(b)	Notes to the financial report	41-50
SD4.2(c)	Accountable officer, chief finance and accounting officer and chairman's declaration	51
SD4.2(d)	Rounding of amounts	42
<i>Other disclosures in notes to the financial statements</i>		
FRD 11	Disclosure of ex-gratia payments	n/a
FRD 21	Responsible person and executive officer disclosures	47

Legislation

Freedom of information Act 1982	33
Building Act 1983	32
Whistleblowers Protection Act 2001	34
Victorian Industry Participation Policy Act 2003	32

Disclosure index



**geelong
performing
artscentre**

50 Little Malop Street. PO Box 991, Geelong Victoria 3220
Phone 03 5225 1200 fax 03 5225 1229
email info@gpac.org.au www.gpac.org.au

**ARTS
VICTORIA**

