

TECHNICAL SPECIFICATION

geelong  
arts  
centre

# OPEN HOUSE

VENUE ADDRESS:  
50 LITTLE MALOP STREET  
GEELONG, VICTORIA 3220



CREATIVE VICTORIA



# CONTENTS



<b>Venue Overview .....</b>	<b>3</b>	<b>Microphones.....</b>	<b>8</b>
<b>Seating .....</b>	<b>3</b>	<b>Cabling .....</b>	<b>8</b>
<b>Loading Dock And Parking .....</b>	<b>4</b>	<b>Vision Facilities .....</b>	<b>8</b>
<b>Access For Scenery.....</b>	<b>4</b>	<b>Projector &amp; Screen .....</b>	<b>8</b>
<b>Fire Safety .....</b>	<b>4</b>	<b>Lighting Facilities .....</b>	<b>8</b>
<b>Electrical Safety .....</b>	<b>4</b>	<b>Main Lighting Control Desk .....</b>	<b>8</b>
<b>Dimensions .....</b>	<b>5</b>	<b>DMX Reticulation .....</b>	<b>8</b>
Proscenium .....	5	<b>Dimmers .....</b>	<b>8</b>
Stage Surface.....	5	<b>Luminaire Allocation .....</b>	<b>8</b>
<b>Rigging .....</b>	<b>6</b>	<b>Lighting Cabling .....</b>	<b>8</b>
<b>Stage Machinery .....</b>	<b>7</b>	<b>Dressing Rooms &amp; Facilities .....</b>	<b>9</b>
Access Equipment.....	7	<b>Green Rooms.....</b>	<b>9</b>
<b>Stage Drapes .....</b>	<b>7</b>	<b>Wardrobe Facilities.....</b>	<b>9</b>
Wall/Window Coverage .....	7	<b>Dressing Rooms.....</b>	<b>10</b>
Legs/Borders/Tabs/Cyclorama/Scrim .....	7	<b>Additional Equipment .....</b>	<b>11</b>
<b>Audio Facilities .....</b>	<b>7</b>	<b>Rehearsal Rooms .....</b>	<b>11</b>
Loudspeaker System .....	7	<b>Outside Broadcast Facilities .....</b>	<b>11</b>
System Processing & Control .....	7	<b>Access &amp; Parking .....</b>	<b>11</b>
Speaker Trim Heights.....	8	<b>Contacts .....</b>	<b>12</b>
Mixing Console .....	8		
Playback .....	8		

# VENUE OVERVIEW

This Australian first contemporary and uniquely creative collaboration space lends itself to intimate audience-performer-community experiences and allows for extraordinary versatility where the traditional boundaries defining audience and performer zones are completely dismantled and the space works as one in multiple dimensions.

When not in use for performance, the Open House has the ability to open up and be used for a range of functions, community events, and other opportunities. Seating up to 250 patrons depending on the mode and arrangement, the space offers varied and versatile seating layouts to reflect the range of uses.

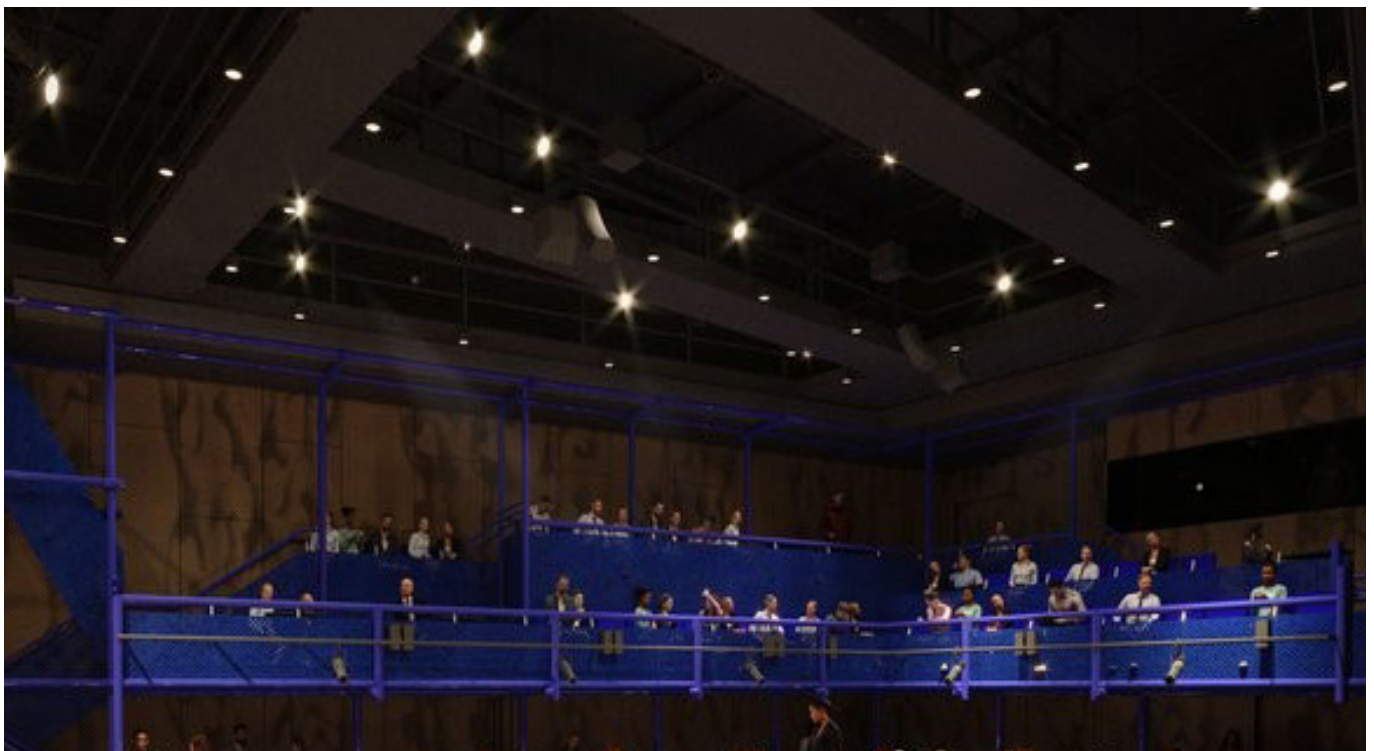
A large, motorised door connects the space to the plaza. The space is supported technically by multiple chain hoists on travelling beams and has rigging to facilitate circus style setups. The specialist stage-lighting and audio-visual systems infrastructure is compatible with the Open House.

## SEATING

Capacity	Up to 250
Mezzanine	50 fixed seats, 10 loose
Ground Floor	Up to 190 loose seats

Please note the versatility of this venue means there is no fixed seating position. Seating layout requirements can be discussed when making your booking.

Wheelchairs and people with disability and/or reduced mobility can be accommodated by prior arrangement.



# LOADING DOCK & PARKING

Loading Dock 3 is the main dock for Open House.

Access: Is via Aitchison Place off Fenwick Street. Vehicles will need to reverse into the loading dock and depart via Little Malop Street.

The entrance to the loading dock is fitted with a roller door. The floor of the loading bay sits 900mm above the floor of the scene dock. The dock is fitted with a platform lift that can travel up to the height of trucks parked in the loading bay and travel down to the scene dock floor level for transfer of scenery.

Loading Bay Entrance	Width	3,600mm
	Height	4,500mm
Lengths of Loading Bay Roller Door to the Bollards in front of dock		12,500mm

Platform Lift	Safetech	
Dimensions	Length	2,420mm
	Width	2,220mm
Platform Flap Depth	900mm	
Platform Flap Width	1,900mm	
Height Clearance	2,640mm	
Nominal Overall Travel Up	2,600mm	
Platform Lift Rollover Capacity	4,000kg	

## ACCESS FOR SCENERY

Is directly from the loading dock through the sound lock onto the Open House through two sets of double doors. Access for larger scenery items and/or equipment to be arranged through the Open House sliding doors facing Little Malop Street.

Inner and Outer Doors (hinged manual double doors opening out)	Height	2,400mm
	Width	2,440mm

## FIRE SAFETY

All scenery and staging elements must be adequately flame proofed.  
No scenery/staging elements are permitted to obstruct the fire exits.

## ELECTRICAL SAFETY

All electrical equipment must display a current Test Tag.

# DIMENSIONS

## PROSCENIUM

There is no Proscenium arch.  
Venue is a ‘Black Box’ style studio space.

## STAGE TRAP

Nil

**19,025mm**  
ROOM DEPTH

Wall to wall

**18,219mm**  
ROOM WIDTH

Wall to wall

**13,647mm**  
SPRUNG FLOOR DEPTH

Performance area

**13,054mm**  
SPRUNG FLOOR WIDTH

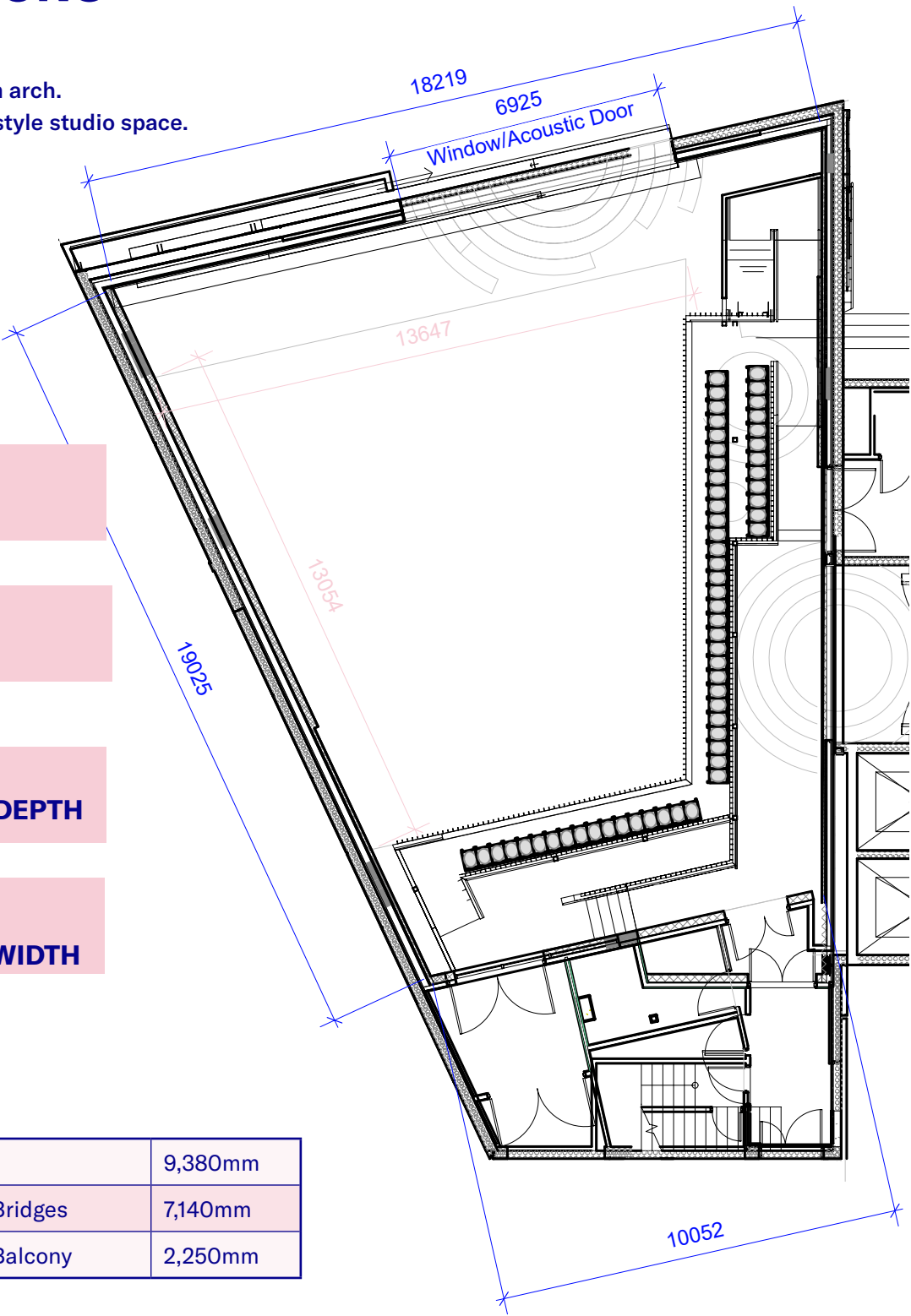
Performance area

## ROOM HEIGHT

Floor to ceiling	9,380mm
Floor to underside of Bridges	7,140mm
Floor to underside of Balcony	2,250mm

## STAGE SURFACE

Rake	Nil
Material	Semi sprung 30mm yellow tongue timber floor covered with 6.4mm Masonite painted black
Wings	Concrete





## EXTERIOR SLIDING WINDOW & ACCOUSTIC DOOR

**6,800mm**  
DOOR WIDTH

Wall to wall

**4,500mm**  
DOOR HEIGHT

Floor to ceiling

## RIGGING

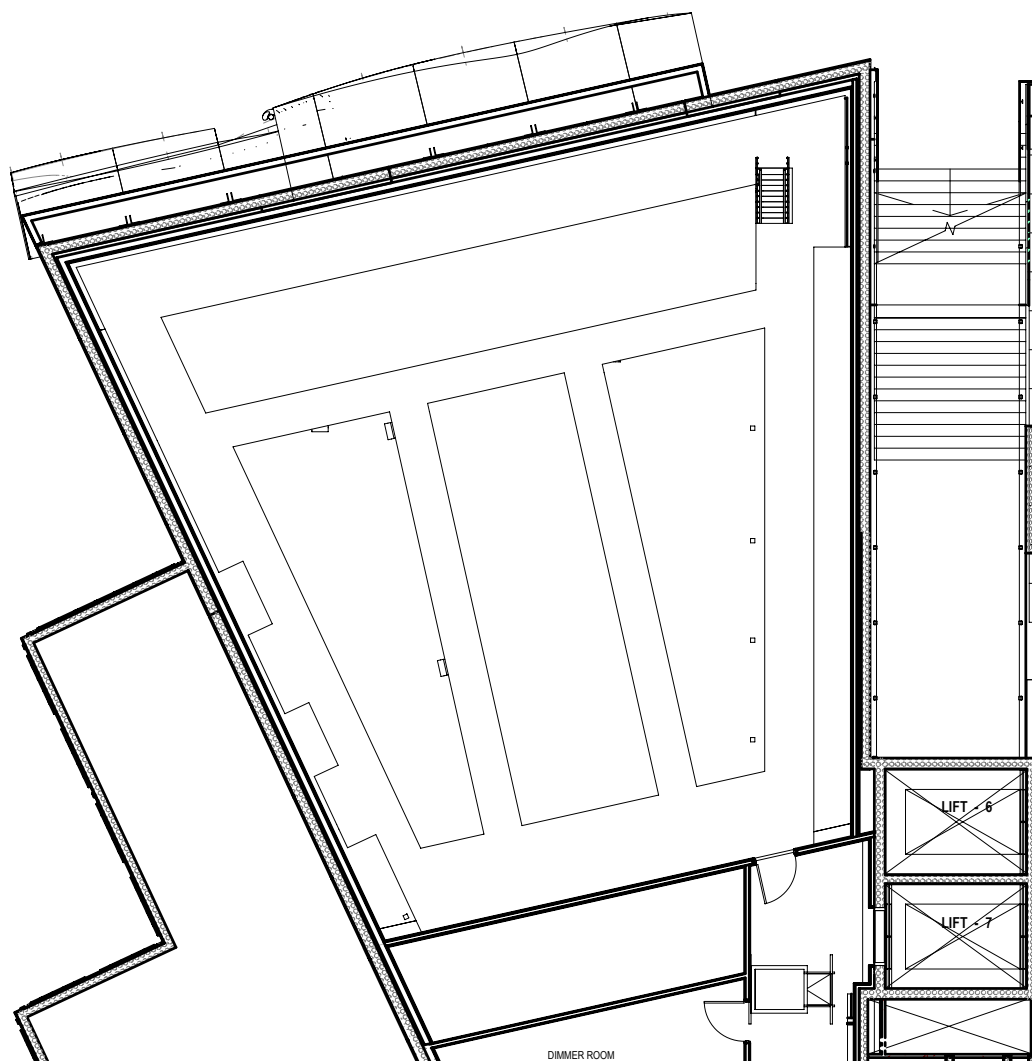
### GENERAL

The Open House is comprised of five lighting bridges in a grid configuration, chain hoists on travelling beams and also has rigging to facilitate circus style setups.

Between each Bridge there are a series of rolling beam and rigging locations for chain motor and static hung equipment.

There are 1,000kg anchor points located in the floor and walls to allow for guying off equipment.

Please contact the Technical Operations Manager for more details.



# STAGE MACHINERY

## ACCESS EQUIPMENT

TBC

# STAGE DRAPES

## WALL/WINDOW COVERAGE

Black acoustic retractable wool drapes are fitted in the space to provide full coverage of all walls and/or windows.

## LEGS/BORDERS/TABS/CYCLORAMA/SCRIM

Can be hired in at additional cost, subject to availability.

# AUDIO FACILITIES

## LOUDSPEAKER SYSTEM

This facility houses a collection of semi-permanent and permanent active loudspeakers that can be arranged in any configuration utilising in-house rigging facilities or clamps to the equipment bars on the lighting bridges. A collection of permanent delay loudspeakers provides optimal coverage to the balcony and under-balcony areas and will complement any arrangement of main speaker system loudspeakers.

4 x Martin Audio CDD-Live12's, with Dante inputs, semi-permanently installed to provide main FoH sound reinforcement.

Additionally, a collection of 6 x Martin Audio CDD-Live 12's, 2 x Martin Audio SXP118 active loudspeakers, and rigging hardware and stands can be made available upon request.

2 x Martin Audio SXP118 active sub-woofers with Dante inputs

8 x Martin Audio CDD8 loudspeakers for permanent, selectable, balcony fill loudspeakers

13 x QSC AD-C6T-LP ceiling loudspeakers for permanent under balcony fill loudspeakers

3 x QSC 8ch networked amplifiers

Power Conditioners for each amplifier to protect from problems caused by AC line voltage irregularities

## SYSTEM PROCESSING & CONTROL

1 x Q-Sys DSP to provide loudspeaker EQ and pre-set control.

1 x Dante & QLAN certified, managed, Network switch & patch-bays

Audio distribution available using the in-house distributed Cat6A (Dante) network and an extensive balanced audio patching infrastructure.

## **SPEAKER TRIM HEIGHTS**

Centre line of flown loudspeakers to floor level: TBC

Left and Right: 6,500mm nominally

Permanent delay loudspeakers (mounted on catwalks): 7,000mm

Sub-woofers: 6,500mm (or ground stacked as required)

## **MIXING CONSOLE**

DIGICO S21 Console

Orange Box

## **PLAYBACK**

MacBook Pro with QLab 4 Audio & Video Licences

## **MICROPHONES**

TBC

## **CABLING**

A number of 3pin XLR and single mode fibre cables available at various lengths.

# **VISION FACILITIES**

## **PROJECTOR & SCREEN**

TBC

# **LIGHTING FACILITIES**

## **MAIN LIGHTING CONTROL DESK**

Grandma XT. includes 15 motorised faders, 60 playbacks, 8,192 control parameters, 6x DMX outputs and 1x DMX input, 3x etherCON connectors, 3x USB 2.0 connectors, 2x USB 3.0

1x External Touchscreen

Keyboard and Mouse

## **DMX RETICULATION**

6x Portable Pathport C-Series nodes with hanging brackets

## **DIMMERS**

6 x GEN VI Dimmer Distro each with 12x 10Amp Circuits

More Dimmers are available (*subject to availability*)

## **LUMINAIRE ALLOCATION**

TBC

## **LIGHTING CABLING**

A number of 5pin DMX, Cat6 and single mode fibre cables available at various lengths



# DRESSING ROOMS & FACILITIES

The Dressing Rooms are located on three levels. Dressing Rooms are shared across all the venues in the Centre.

Dressing Rooms 8 and 9 are located and accessible from Stage Left and Lift 3. Dressing Rooms 3-12-13-17 are located and accessible from Stage Right and Lift 1, 1-4 are located above stage level and are accessed via a stairwell located in the upstage opposite prompt corner.

## GREEN ROOMS – NUMBERS AND FACILITIES

ROOM NO.	LEVEL	SQ M	KITCHENETTE
Green Room 1	G	90m <sup>2</sup>	1
Green Room 2	2	92m <sup>2</sup>	1

## PRODUCTION OFFICES

ROOM NO.	LEVEL	SQ M	DESKS
Production Office	B	17m <sup>2</sup>	2
Stage Managment Office	2	14m <sup>2</sup>	2

# WARDROBE FACILITIES.

There is a well-equipped Laundry with an adjoining Drying Room and Costume Workshop/Store located on the Lower Ground Floor. The Wardrobe Department and Dressing Rooms are all equipped with portable wardrobe racks.

Laundry	3x Commercial Washer	
	3x Commercial Dryers	
	Electric Steam Irons	
	Ironing Boards	
	Steamer Unit	
	2x Work Benches	
	Fume Extractor (for wig maintenance)	
Drying Room	Length	5,180mm
	Width	2,500mm
Costume Workshop/Store	2x Work Benches	
	Portable Wardrobe Racks	

## DRESSING ROOM – NUMBERS AND FACILITIES

ROOM NO.	LEVEL	SQ M	BASINS	TOILET ENSUITE	SHOWERS ENSUITE	MAKE-UP TABLES
1	G	38m <sup>2</sup>	3	0	0	10
2	G	38m <sup>2</sup>	3	0	0	10
3	G	14m <sup>2</sup>	1	1	1	3
4	G	14m <sup>2</sup>	1	1	1	3
5	G	14m <sup>2</sup>	1	0	0	5
6	G	17m <sup>2</sup>	1	1	1	5
7 (quick change)	G	8m <sup>2</sup>	0	0	0	2
8 (quick change)	1	7m <sup>2</sup>	0	0	0	2
9	1	10m <sup>2</sup>	1	1	1	4
10	1	19m <sup>2</sup>	1	1	1	4
11	1	20m <sup>2</sup>	1	1	1	4
12	1	16m <sup>2</sup>	1	1	1	2
13	1	14m <sup>2</sup>	1	1	1	2
14	1	14m <sup>2</sup>	1	1	1	2
15	2	40m <sup>2</sup>	3	1	1	12
16	2	37m <sup>2</sup>	3	1	1	12
17	2	15m <sup>2</sup>	1	1	1	4
18	2	22m <sup>2</sup>	1	1	1	6
19	2	22m <sup>2</sup>	1	1	1	6
20	2	19m <sup>2</sup>	1	1	1	2

# ADDITIONAL EQUIPMENT

Additional Lighting and Audio/Video equipment are not included in the standard schedule of equipment and may be subject to additional charges and availability.

# OUTSIDE BROADCAST FACILITIES

Theatre Location: Control Room

Facilities: TBC

External Location: Loading Dock 3

Facilities: Single mode Fibre from Loading Dock 2 to Stage  
Cable pass from Loading Dock 2 into scene dock

# REHEARSAL ROOMS

The Centre has 4 rehearsal Studios with access to amenities and kitchenettes. All Studios have sprung floors suitable for dance, and are equipped with mirrors, black masking and grids for lighting.

ROOM	LEVEL	SQ M	DESCRIPTION	CAPACITY
Studio 1	L3 Ryrie Street	109m <sup>2</sup>	Multipurpose Studio Space	31
Studio 2	L3 Ryrie Street	138m <sup>2</sup>	Multipurpose Studio Space	31
Studio 3	L4 Ryrie Street	117m <sup>2</sup>	Multipurpose Studio Space	31
Studio 4	L4 Ryrie Street	279m <sup>2</sup>	Rehearsal and Performance Studio Space	124

# ACCESS & PARKING

## STAGE DOOR

Hirers and staff must enter and exit the Centre through the stage door located off Little Malop Street.

## PARKING

Geelong Arts Centre does not have any on-site parking. Street parking is available around the Centre.

Off-street parking options:

The Civic Centre Car Park is located opposite the City Hall in Gheringhap Street.

Parking is available Monday to Thursday from 7:30am - 6:00pm.

Friday and Saturday 7:30am - midnight.

Free parking offered after 6:00pm.

Haymarket Car Park is located on Myers Street with all day metered bays.

# CONTACTS

Please refer all Technical queries to [technical@geelongartscentre.org.au](mailto:technical@geelongartscentre.org.au)

**Ben Van Dillen**

Technical Operations Manager

P: (03) 5225 1267

M: 0412 296 441

**Dean Taylor**

Head Technician

P: (03) 5225 1226



Date: 08/11/2022

Version: 1.5

Updated By: Ben Van Dillen, Garry Snowdon